

Anti-FKBP12/FKBP1A antibody



Catalog Number: 102527

Product name

Anti-FKBP12/FKBP1A antibody

Immunogen

[Human FKBP12/FKBP1A \(His Tag\) recombinant protein](#)

Specificity

Human FKBP1A / FKBP12

No cross-reactivity in ELISA with E.coli cell lysate

Antibody description

Mouse monoclonal to FKBP12/FKBP1A

Preparation

This antibody was produced from a hybridoma resulting from the fusion of a mouse myeloma with B cells obtained from a mouse immunized with purified, recombinant Human recombinant Human FKBP1A (rh FKBP1A; NP_463460; Met 1-Glu 108). The IgG fraction of the cell culture supernatant was purified by Protein A affinity chromatography.

Formulation

0.2 µm filtered solution in PBS with 5% trehalose

Storage

This antibody can be stored at 2°C-8°C for one month without detectable loss of activity. Antibody products are stable for twelve months from date of receipt when stored at -20°C to -80°C.

Preservative-Free.

Sodium azide is recommended to avoid

contamination (final concentration 0.05%-0.1%). It is toxic to cells and should be disposed of properly. Avoid repeated freeze-thaw cycles.

Clonality

Monoclonal

Ig Type

Mouse IgG1

Applications

ELISA, WB

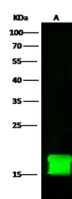
Dilutions

WB: 2-10 µg/mL

ELISA: 0.5-1 µg/mL

This antibody can be used at 0.5-1 µg/mL with the appropriate secondary reagents to detect Human FKBP1A. The detection limit for Human FKBP1A is 0.31 ng/well.

Validations



Items	Lanes	A
Sample (whole cell lysate)		SH-SY5Y
Sample Volume (µg/lane)		60
Gel		13% SDS-PAGE reducing gel
Recommended Concentration		2-10 µg/ml
Secondary Antibody		Dylight 800-labeled Antibody To Mouse IgG (H+L), at 1:7500 dilution.

FKBP12 / FKBP1A Antibody, Mouse MAb, Western blot