

Anti-Syntaxin 6/STX6 antibody



Catalog Number: 102506

Product name

Anti-Syntaxin 6/STX6 antibody

Specificity

Human Syntaxin 6 / STX6

Antibody description

Rabbit polyclonal to Syntaxin 6/STX6

Preparation

Produced in rabbits immunized with a synthetic peptide corresponding to the center region of the Human Syntaxin 6 / STX6, and purified by antigen affinity chromatography.

Formulation

0.2 µm filtered solution in PBS

Storage

This antibody can be stored at 2°C-8°C for one month without detectable loss of activity. Antibody products are stable for twelve months from date of receipt when stored at -20°C to -80°C.

Preservative-Free.

Sodium azide is recommended to avoid contamination (final concentration 0.05%-0.1%). It is toxic to cells and should be disposed of

properly. Avoid repeated freeze-thaw cycles.

Clonality

Polyclonal

Ig Type

Rabbit IgG

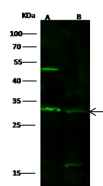
Applications

WB

Dilutions

WB: 5-20 µg/ml

Validations



Lanes	A	B
Items		
Sample (whole cell lysate)	A431	HL60
Sample Volume (µg/lane)	30	30
Gel	13% SDS-PAGE reducing gel	
Recommended Concentration	5-20 µg/ml	
Secondary Antibody	Dylight 800 labeled Antibody to Rabbit IgG (H+), at 1:5000 dilution.	
	Developed using Odyssey imaging system.	
Explanation	Predicted band size : 29 kDa Observed band size : 29 kDa Additional bands at : 47 kDa and 18 kDa (We are unsure as to the identity of these extra bands.)	

Syntaxin 6 / STX6 Antibody, Rabbit PAb, Antigen Affinity Purified, Western blot