

# Anti-Serpina3 antibody



Catalog Number: 102465

## Product name

Anti-Serpina3 antibody

## Immunogen

[Human SerpinA3 \(His Tag\) recombinant protein](#)

## Specificity

Human SerpinA3 / AACT

## Antibody description

Rabbit polyclonal to SerpinA3

## Preparation

Produced in rabbits immunized with purified, recombinant Human SerpinA3 (rh SerpinA3; NP\_001076.2; Met 1-Ala 423). SerpinA3 specific IgG was purified by human SerpinA3 affinity chromatography.

## Formulation

0.2  $\mu$ m filtered solution in PBS with 5% trehalose

## Storage

This antibody can be stored at 2°C-8°C for one month without detectable loss of activity. Antibody products are stable for twelve months from date of receipt when stored at -20°C to -80°C.

Preservative-Free.

Sodium azide is recommended to avoid contamination (final concentration 0.05%-0.1%). It is toxic to cells and should be disposed of properly. Avoid repeated freeze-thaw cycles.

## Clonality

Polyclonal

## Ig Type

Rabbit IgG

## Applications

ELISA, WB

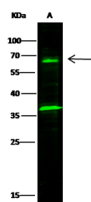
## Dilutions

WB: 5-10  $\mu$ g/mL

ELISA: 0.5-1  $\mu$ g/mL

This antibody can be used at 0.5-1  $\mu$ g/mL with the appropriate secondary reagents to detect Human SERPINA3. The detection limit for Human SERPINA3 is approximately 0.0049 ng/well.

## Validations



Items	Lanes
Sample (whole cell lysate)	A
Sample Volume ( $\mu$ g/lane)	Hela
Gel	30
Recommended Concentration	13% SDS-PAGE reducing gel
Secondary Antibody	5-10 $\mu$ g/ml
	Dylight 800-labeled Antibody To Rabbit IgG (H+L), at 1:5000 dilution.

Serpina3 / AACT Antibody, Rabbit PAb, Antigen Affinity Purified, Western blot