

# Anti-Serpind1 antibody



Catalog Number: 102379

## Product name

Anti-Serpind1 antibody

## Immunogen

[Mouse SerpinD1 \(His Tag\) recombinant protein](#)

## Specificity

Mouse SerpinD1 / HCII

## Antibody description

Rabbit polyclonal to SerpinD1

## Preparation

Produced in rabbits immunized with purified, recombinant Mouse SerpinD1 (rM SerpinD1; NP\_032249.3; Met 1-Ser 478). SerpinD1 specific IgG was purified by mouse SerpinD1 affinity chromatography.

## Formulation

0.2 µm filtered solution in PBS with 5% trehalose

## Storage

This antibody can be stored at 2°C-8°C for one month without detectable loss of activity. Antibody products are stable for twelve months from date of receipt when stored at -20°C to -80°C.

Preservative-Free.

Sodium azide is recommended to avoid contamination (final concentration 0.05%-0.1%). It is toxic to cells and should be disposed of properly. Avoid repeated freeze-thaw cycles.

## Clonality

Polyclonal

## Ig Type

Rabbit IgG

## Applications

ELISA, IHC-P

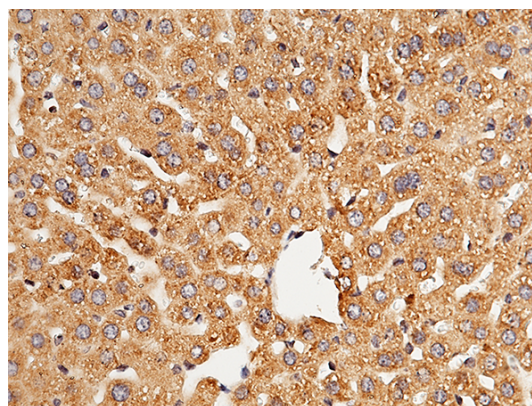
## Dilutions

ELISA: 0.5-1.0 µg/mL

This antibody can be used at 0.5-1.0 µg/mL with the appropriate secondary reagents to detect Mouse SerpinD1. The detection limit for Mouse SerpinD1 is 0.00245 ng/well.

IHC-P: 0.1-2 µg/mL

## Validations



Serpind1 / HCII Antibody, Rabbit PAb, Antigen Affinity Purified, Immunohistochemistry

Immunochemical staining of mouse SERPIND1 in mouse liver with rabbit polyclonal antibody (1 µg/mL, formalin-fixed paraffin embedded sections). Positive staining was localized to hepatocyte.