

Catalog Number: 102256

Product name

Anti-Osteonectin / SPARC antibody

Immunogen

[Human Osteonectin / SPARC \(His Tag\) recombinant protein](#)

Specificity

Human SPARC / Osteonectin

Antibody description

Rabbit polyclonal to Osteonectin / SPARC

Preparation

Produced in rabbits immunized with purified, recombinant Human SPARC (rh SPARC; NP_003109.1; Met 1-Ile 303). SPARC specific IgG was purified by human SPARC affinity chromatography.

Formulation

0.2 µm filtered solution in PBS with 5% trehalose

Storage

This antibody can be stored at 2°C-8°C for one month without detectable loss of activity. Antibody products are stable for twelve months from date of receipt when stored at -20°C to -80°C.

Preservative-Free.

Sodium azide is recommended to avoid contamination (final concentration 0.05%-0.1%). It is toxic to cells and should be disposed of properly. Avoid repeated freeze-thaw cycles.

Clonality

Polyclonal

Ig Type

Rabbit IgG

Applications

ELISA, IHC-P

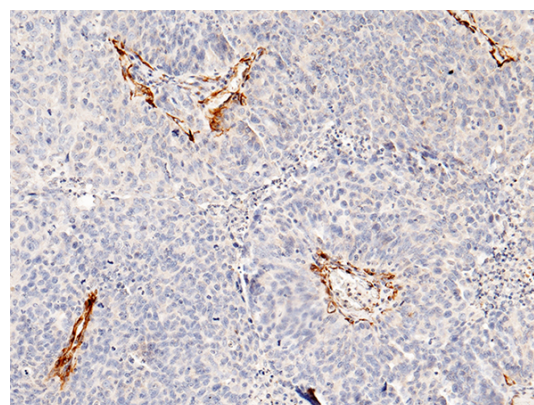
Dilutions

ELISA: 0.1-0.2 µg/mL

This antibody can be used at 0.1-0.2 µg/mL with the appropriate secondary reagents to detect Human SPARC. The detection limit for Human SPARC is approximately 0.00245 ng/well.

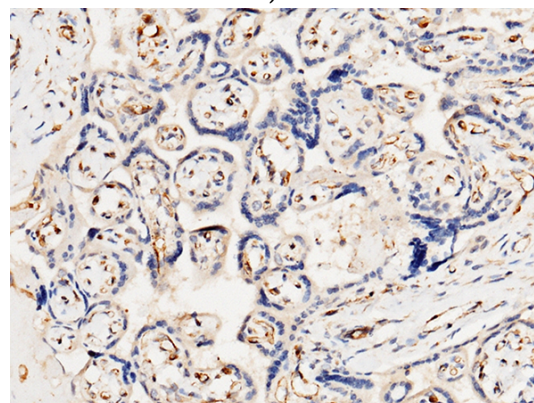
IHC-P: 0.1-2 µg/mL

Validations



Osteonectin / SPARC Antibody, Rabbit PAb, Antigen Affinity Purified, Immunohistochemistry

Immunochemical staining of human SPARC in human ovarian cancer with rabbit polyclonal antibody (1 µg/mL, formalin-fixed paraffin embedded sections).



Osteonectin / SPARC Antibody, Rabbit PAb,

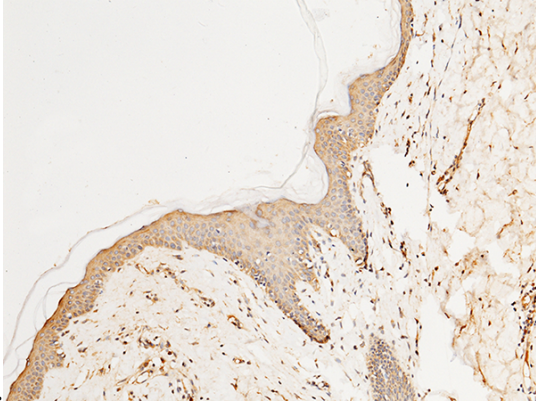
Anti-Osteonectin / SPARC antibody



Catalog Number: 102256

Antigen Affinity Purified, Immunohistochemistry

Immunochemical staining of human SPARC in human placenta with rabbit polyclonal antibody (1 $\mu\text{g}/\text{mL}$, formalin-fixed paraffin embedded



sections).

Osteonectin / SPARC Antibody, Rabbit PAb, Antigen Affinity Purified, Immunohistochemistry

Immunochemical staining of human SPARC in human skin with rabbit polyclonal antibody (1 $\mu\text{g}/\text{mL}$, formalin-fixed paraffin embedded sections).