

# Anti-TGF-beta 1/TGFB1 antibody



Catalog Number: 102155

## Product name

Anti-TGF-beta 1/TGFB1 antibody

## Specificity

Human TGF-beta1 / TGFB1

**No cross-reactivity** with Human cell lysate (293 cell line) in WB and ELISA.

## Antibody description

Mouse monoclonal to TGF-beta 1/TGFB1

## Preparation

This antibody was produced from a hybridoma resulting from the fusion of a mouse myeloma with B cells obtained from a mouse immunized with purified, recombinant Human TGF-beta1 / TGFB1 (rh TGF-beta1; Ala 279-Ser 390; NP\_000651.3). The IgG fraction of the cell culture supernatant was purified by Protein A affinity chromatography

## Formulation

0.2 µm filtered solution in PBS with 5% trehalose

## Storage

This antibody can be stored at 2°C-8°C for one month without detectable loss of activity. Antibody products are stable for twelve months from date of receipt when stored at -20°C to -80°C. Preservative-Free.

Sodium azide is recommended to avoid contamination (final concentration 0.05%-0.1%). It is toxic to cells and should be disposed of properly. Avoid repeated freeze-thaw cycles.

## Clonality

Monoclonal

## Ig Type

Mouse IgG1

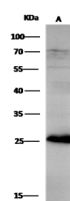
## Applications

WB

## Dilutions

WB: 5-20 µg/mL

## Validations



Items	Lanes	A
Sample (whole cell lysate)		HepG2
Sample Volume (µg/lane)		30
Gel		13% SDS-PAGE reducing gel
Recommended Concentration		5-20 µg/ml
Secondary Antibody		HRP Conjugated Rabbit anti-mouse IgG(ab)2, at 1:2000 dilution.

TGF-beta 1 / TGFB1 Antibody, Mouse MAb, Western blot