

Anti-Prostasin/PRSS8 antibody



Catalog Number: 102121

Product name

Anti-Prostasin/PRSS8 antibody

Immunogen

[Human Prostasin/PRSS8 \(His Tag\) recombinant protein](#)

Specificity

Human Prostasin / PRSS8

Antibody description

Rabbit polyclonal to Prostasin/PRSS8

Preparation

Produced in rabbits immunized with purified, recombinant Human Prostasin / PRSS8 (rh PRSS8; NP_002764.1; Ala 30-Arg 322). PRSS8 specific IgG was purified by human PRSS8 affinity chromatography.

Formulation

0.2 µm filtered solution in PBS with 5% trehalose

Storage

This antibody can be stored at 2°C-8°C for one month without detectable loss of activity. Antibody products are stable for twelve months from date of receipt when stored at -20°C to -80°C.

Preservative-Free.

Sodium azide is recommended to avoid contamination (final concentration 0.05%-0.1%). It is toxic to cells and should be disposed of properly. Avoid repeated freeze-thaw cycles.

Clonality

Polyclonal

Ig Type

Rabbit IgG

Applications

ELISA, IHC-P

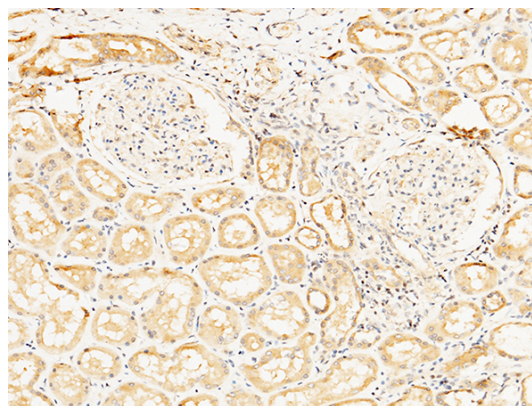
Dilutions

ELISA: 0.5-1.0 µg/mL

This antibody can be used at 0.5-1.0 µg/mL with the appropriate secondary reagents to detect Human PRSS8. The detection limit for Human PRSS8 is 0.00245 ng/well.

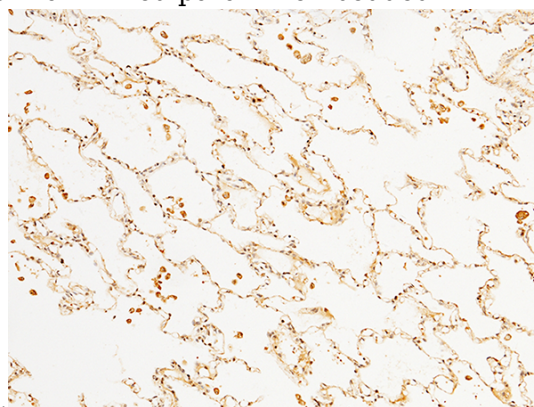
IHC-P: 0.1-2 µg/mL

Validations



Prostasin / PRSS8 Antibody, Rabbit PAb, Antigen Affinity Purified, Immunohistochemistry

Immunochemical staining of human PRSS8 in human kidney with rabbit polyclonal antibody (1 µg/mL, formalin-fixed paraffin embedded



sections).

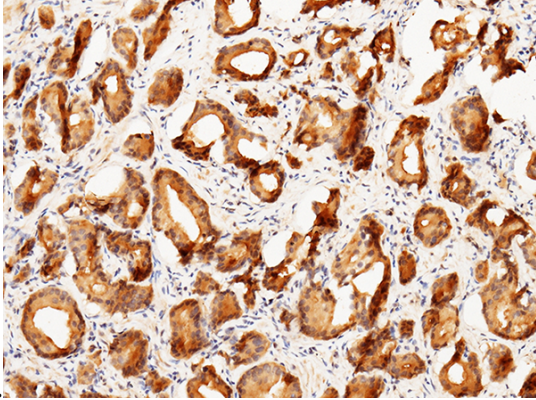
Prostasin / PRSS8 Antibody, Rabbit PAb, Antigen Affinity Purified, Immunohistochemistry

Anti-Prostasin/PRSS8 antibody



Catalog Number: 102121

Immunochemical staining of human PRSS8 in human lung with rabbit polyclonal antibody (1 $\mu\text{g}/\text{mL}$, formalin-fixed paraffin embedded



sections).

Prostasin / PRSS8 Antibody, Rabbit PAb, Antigen Affinity Purified, Immunohistochemistry

Immunochemical staining of human PRSS8 in human prostatic carcinoma with rabbit polyclonal antibody (1 $\mu\text{g}/\text{mL}$, formalin-fixed paraffin embedded sections).