

# Anti-CD38 antibody



Catalog Number: 102060

## Product name

Anti-CD38 antibody

## Immunogen

[Mouse CD38 \(His Tag\) recombinant protein](#)

## Specificity

Mouse CD38

## Antibody description

Rabbit polyclonal to CD38

## Preparation

Produced in rabbits immunized with purified, recombinant Mouse CD38 (rM CD38; NP\_031672.2; Leu 45-Thr 304). CD38 specific IgG was purified by mouse CD38 affinity chromatography

## Formulation

0.2 µm filtered solution in PBS with 5% trehalose

## Storage

This antibody can be stored at 2°C-8°C for one month without detectable loss of activity. Antibody products are stable for twelve months from date of receipt when stored at -20°C to -80°C.

Preservative-Free.

Sodium azide is recommended to avoid contamination (final concentration 0.05%-0.1%). It is toxic to cells and should be disposed of properly. Avoid repeated freeze-thaw cycles.

## Clonality

Polyclonal

## Ig Type

Rabbit IgG

## Applications

ELISA, IHC-P, FCM

## Dilutions

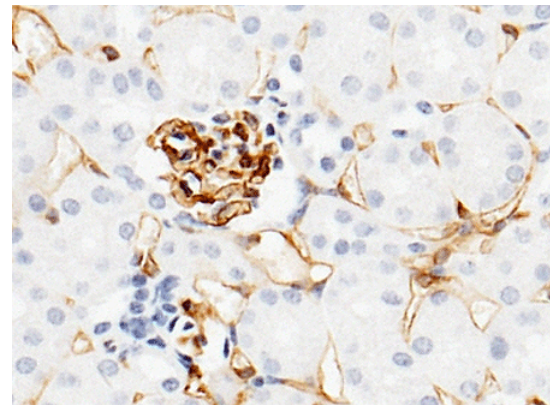
ELISA: 0.5-1.0 µg/mL

This antibody can be used at 0.5-1.0 µg/mL with the appropriate secondary reagents to detect Mouse CD38. The detection limit for Mouse CD38 is 0.00245 ng/well.

IHC-P: 0.1-2 µg/mL

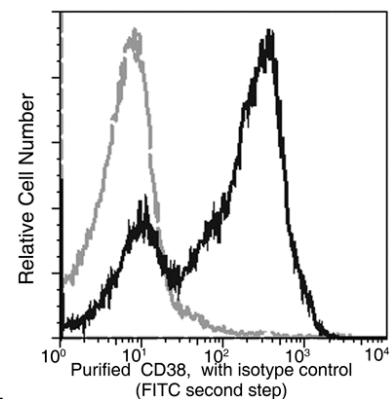
FCM: 0.5-2 µg/Test

## Validations



CD38 Antibody, Rabbit PAb, Antigen Affinity Purified, Immunohistochemistry

Immunochemical staining of mouse CD38 in mouse kidney with rabbit polyclonal antibody (0.2 µg/mL, formalin-fixed paraffin embedded sections). Positive staining was localized to



endotheliocyte.

CD38 Antibody, Rabbit PAb, Antigen Affinity

# Anti-CD38 antibody

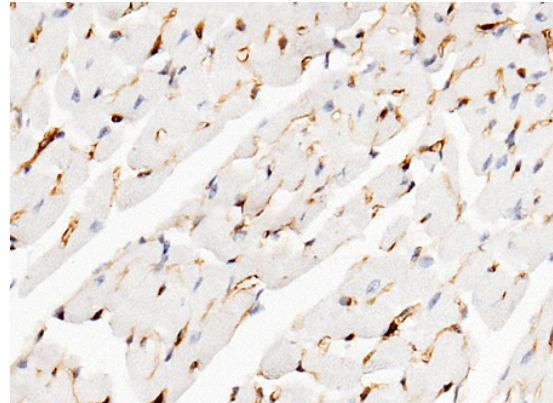


Catalog Number: 102060

---

Purified, Flow cytometric

Flow cytometric analysis of CD38 expression on spleen lymphocytes. BALB/c splenocytes were stained with Mouse CD38 Affinity Purified Polyclonal Ab (50191-RP02, 1  $\mu$ g/test), then a FITC-conjugated second step antibody. The histogram were derived from the gated events based on light scattering characteristics of lymphocytes.



CD38 Antibody, Rabbit PAb, Antigen Affinity Purified, Immunohistochemistry

Immunochemical staining of mouse CD38 in mouse heart with rabbit polyclonal antibody (0.2  $\mu$ g/mL, formalin-fixed paraffin embedded sections). Positive staining was localized to endotheliocyte.