

# Anti-IGFBP-2 / IGFBP2 antibody



Catalog Number: 102059

## Product name

Anti-IGFBP-2 / IGFBP2 antibody

## Immunogen

[Rhesus IGFBP-2 / IGFBP2 \(His Tag\) recombinant protein](#)

## Specificity

Cynomolgus IGFBP-2 / IGFBP2

## Antibody description

Rabbit polyclonal to IGFBP-2 / IGFBP2

## Preparation

Produced in rabbits immunized with purified, recombinant Cynomolgus IGFBP-2 / IGFBP2 (rh IGFBP-2 / IGFBP2; F6YKM5; Met1-Gln324). IGFBP-2 / IGFBP2 specific IgG was purified by Cynomolgus IGFBP-2 / IGFBP2 affinity chromatography.

## Formulation

0.2 µm filtered solution in PBS

## Storage

This antibody can be stored at 2°C-8°C for one month without detectable loss of activity. Antibody products are stable for twelve months from date of receipt when stored at -20°C to -80°C.

Preservative-Free.

Sodium azide is recommended to avoid contamination (final concentration 0.05%-0.1%). It is toxic to cells and should be disposed of properly. Avoid repeated freeze-thaw cycles.

## Clonality

Polyclonal

## Ig Type

Rabbit IgG

## Applications

ELISA, WB, IHC-P, IP

## Dilutions

WB: 2-10 µg/mL

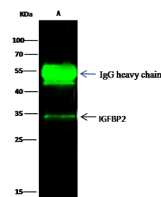
ELISA: 0.1-0.2 µg/mL

This antibody can be used at 0.1-0.2 µg/mL with the appropriate secondary reagents to detect Cynomolgus IGFBP-2 / IGFBP2. The detection limit for Cynomolgus IGFBP-2 / IGFBP2 is < 0.039 ng/well.

IHC-P: 1-4 µg/mL

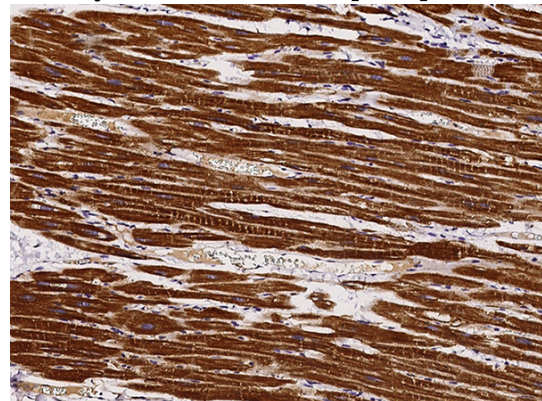
IP: 1-4 µg/mg of lysate

## Validations



Lanes	A
Sample (whole cell lysate)	5H-SY5Y
Sample quantity	0.5 mg
IP antibody quantity	2 µg
Protein G agarose	15 µl of 50 % Protein G Agarose
Gel	13 % SDS-PAGE reducing gel
Primary antibody	CYNOMOLGUS IGFBP2 antibody at 5 µg/ml
Secondary antibody	Dylight 800-labeled antibody to rabbit IgG (H+L), at 1:5000 dilution

IGFBP-2 / IGFBP2 Antibody, Rabbit PAb, Antigen Affinity Purified, Immunoprecipitation



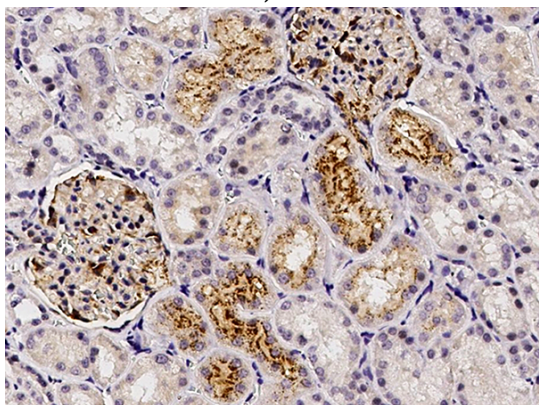
IGFBP-2 / IGFBP2 Antibody, Rabbit PAb, Antigen Affinity Purified, Immunohistochemistry

# Anti-IGFBP-2 / IGFBP2 antibody



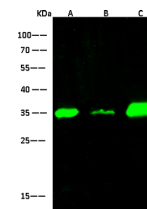
Catalog Number: 102059

Immunochemical staining of cynomolgus IGFBP2 in cynomolgus heart with rabbit polyclonal antibody (3 µg/mL, formalin-fixed paraffin embedded sections).



IGFBP-2 / IGFBP2 Antibody, Rabbit PAb, Antigen Affinity Purified, Immunohistochemistry

Immunochemical staining of cynomolgus IGFBP2 in cynomolgus kidney with rabbit polyclonal antibody (3 µg/mL, formalin-fixed paraffin embedded sections).



Items	Lanes	A	B	C
Sample (whole cell lysate)		Jurkat	A549	SH-SY5Y
Sample Volume (µg/lane)		30	30	30
Gel	13% SDS-PAGE reducing gel			
Recommended Concentration	2-10 µg/ml			
Secondary Antibody	Dylight 800-labeled Antibody To Rabbit IgG (H+L), at 1:5000 dilution.			
Explanation	Developed using Odyssey imaging system. Predicted band size : 35 kDa Observed band size : 35 kDa			

IGFBP-2 / IGFBP2 Antibody, Rabbit PAb, Antigen Affinity Purified, Western blot