

Anti-NBL1/DAND1 antibody



Catalog Number: 102001

Product name

Anti-NBL1/DAND1 antibody

Immunogen

[Human NBL1/DAND1 \(His Tag\) recombinant protein](#)

Specificity

Human NBL1 / DAN / DAND1

Antibody description

Rabbit polyclonal to NBL1/DAND1

Preparation

Produced in rabbits immunized with purified, recombinant Human NBL1 / DAN (rh NBL1; NP_005371.1; Met 1-Asp 180). NBL1 specific IgG was purified by human NBL1 affinity chromatography.

Formulation

0.2 µm filtered solution in PBS with 5% trehalose

Storage

This antibody can be stored at 2°C-8°C for one month without detectable loss of activity. Antibody products are stable for twelve months from date of receipt when stored at -20°C to -80°C.

Preservative-Free.

Sodium azide is recommended to avoid contamination (final concentration 0.05%-0.1%). It is toxic to cells and should be disposed of properly. Avoid repeated freeze-thaw cycles.

Clonality

Polyclonal

Ig Type

Rabbit IgG

Applications

ELISA, IHC-P

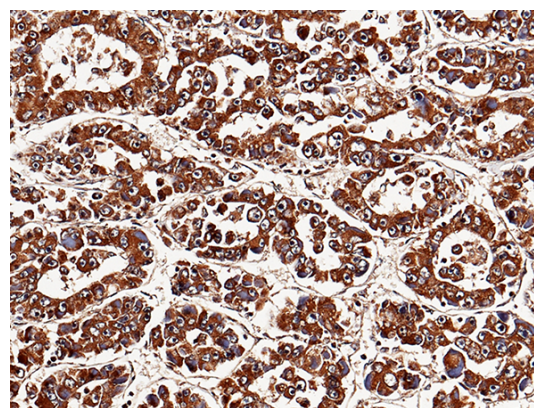
Dilutions

ELISA: 0.5-1.0 µg/mL

This antibody can be used at 0.5-1.0 µg/mL with the appropriate secondary reagents to detect Human DAN. The detection limit for Human DAN is 0.00245 ng/well.

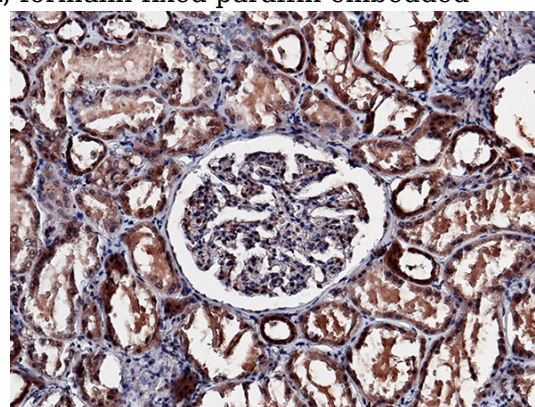
IHC-P: 0.5-5 µg/mL

Validations



NBL1 / DAND1 / DAN Antibody, Rabbit PAb, Antigen Affinity Purified, Immunohistochemistry

Immunochemical staining of human DAN in human hepatoma with rabbit polyclonal antibody (5 µg/mL, formalin-fixed paraffin embedded



sections).

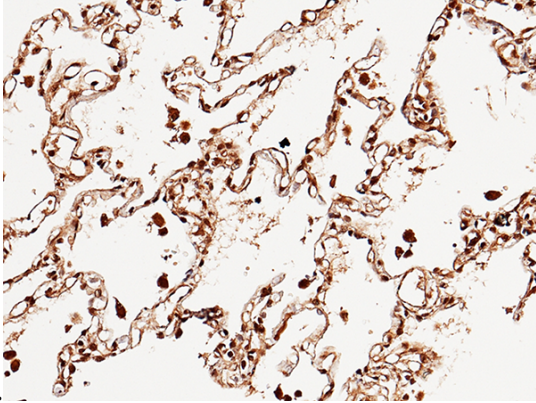
NBL1 / DAND1 / DAN Antibody, Rabbit PAb, Antigen Affinity Purified, Immunohistochemistry

Anti-NBL1/DAND1 antibody



Catalog Number: 102001

Immunochemical staining of human DAN in human kidney with rabbit polyclonal antibody (5 $\mu\text{g}/\text{mL}$, formalin-fixed paraffin embedded



NBL1 / DAND1 / DAN Antibody, Rabbit PAb, Antigen Affinity Purified, Immunohistochemistry

Immunochemical staining of human DAN in human lung with rabbit polyclonal antibody (5 $\mu\text{g}/\text{mL}$, formalin-fixed paraffin embedded sections).

sections).