

# Anti-ENPP7 antibody



Catalog Number: 102000

## Product name

Anti-ENPP7 antibody

## Immunogen

[Human ENPP7 \(His Tag\) recombinant protein](#)

## Specificity

Human ENPP7 / NPP-7

## Antibody description

Rabbit polyclonal to ENPP7

## Preparation

Produced in rabbits immunized with purified, recombinant Human ENPP7 / NPP-7 (rh ENPP7; NP\_848638.2; Met 1-Ser 439). ENPP7 specific IgG was purified by human ENPP7 affinity chromatography.

## Formulation

0.2 µm filtered solution in PBS with 5% trehalose

## Storage

This antibody can be stored at 2°C-8°C for one month without detectable loss of activity. Antibody products are stable for twelve months from date of receipt when stored at -20°C to -80°C.

Preservative-Free.

Sodium azide is recommended to avoid contamination (final concentration 0.05%-0.1%). It is toxic to cells and should be disposed of properly. Avoid repeated freeze-thaw cycles.

## Clonality

Polyclonal

## Ig Type

Rabbit IgG

## Applications

ELISA, WB

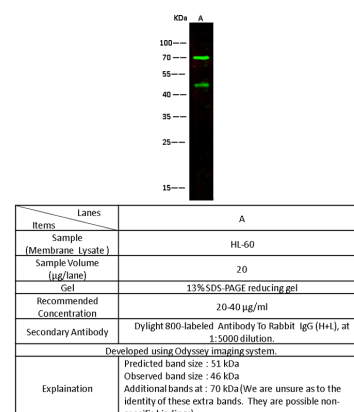
## Dilutions

WB: 20-40 µg/mL

ELISA: 0.5-1.0 µg/mL

This antibody can be used at 0.5-1.0 µg/mL with the appropriate secondary reagents to detect Human ENPP7. The detection limit for Human ENPP7 is 0.00245 ng/well.

## Validations



ENPP7 / NPP-7 Antibody, Rabbit PAb, Antigen Affinity Purified, Western blot