

# Anti-Granulin/Progranulin antibody



Catalog Number: 101944

## Product name

Anti-Granulin/Progranulin antibody

## Immunogen

[Human Granulin/Progranulin \(His Tag\) recombinant protein](#)

## Specificity

Human Granulin / GRN

## Antibody description

Rabbit polyclonal to Granulin/Progranulin

## Preparation

Produced in rabbits immunized with purified, recombinant Human GRN / Granulin (rh GRN; Met 1-Leu 593; NP\_002078.1). GRN specific IgG was purified by human GRN affinity chromatography.

## Formulation

0.2 µm filtered solution in PBS with 5% trehalose

## Storage

This antibody can be stored at 2°C-8°C for one month without detectable loss of activity. Antibody products are stable for twelve months from date of receipt when stored at -20°C to -80°C.

Preservative-Free.

Sodium azide is recommended to avoid contamination (final concentration 0.05%-0.1%). It is toxic to cells and should be disposed of properly. Avoid repeated freeze-thaw cycles.

## Clonality

Polyclonal

## Ig Type

Rabbit IgG

## Applications

ELISA, IHC-P

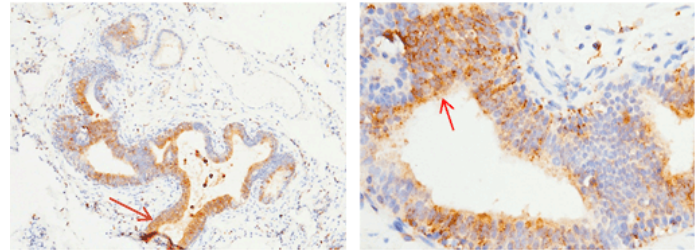
## Dilutions

ELISA: 0.5-1.0 µg/mL

This antibody can be used at 0.5-1.0 µg/mL with the appropriate secondary reagents to detect Human GRN. The detection limit for Human GRN is 0.00245 ng/well.

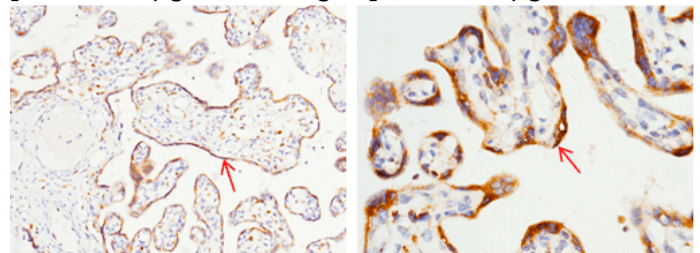
IHC-P: 0.2-2 µg/mL

## Validations



Granulin / GRN / Progranulin Antibody, Rabbit PAb, Antigen Affinity Purified, Immunohistochemistry

Immunohistochemical staining of formalin fixed, paraffin-embedded human epididymis showing epithelium cells staining (red arrow). The left panel: 0.2 µg/ml The right panel: 0.2 µg/ml



Granulin / GRN / Progranulin Antibody, Rabbit PAb, Antigen Affinity Purified, Immunohistochemistry

Immunohistochemical staining of formalin fixed, paraffin-embedded human placenta showing trophoblastic cell staining (red arrow). The left panel: 0.2 µg/ml The right panel: 2 µg/ml