

Anti-Fractalkine/CX3CL1 antibody



Catalog Number: 101942

Product name

Anti-Fractalkine/CX3CL1 antibody

Immunogen

[Human Fractalkine/CX3CL1 \(His Tag\) recombinant protein](#)

Specificity

Human CX3CL1 / FKN

Antibody description

Rabbit polyclonal to Fractalkine/CX3CL1

Preparation

Produced in rabbits immunized with purified, recombinant Human CX3CL1 extracellular domain (rhCX3CL1; NP_002987.1; Met 1-Arg 339). CX3CL1 specific IgG was purified by human CX3CL1 affinity chromatography.

Formulation

0.2 µm filtered solution in PBS with 5% trehalose

Storage

This antibody can be stored at 2°C-8°C for one month without detectable loss of activity. Antibody products are stable for twelve months from date of receipt when stored at -20°C to -80°C.

Preservative-Free.

Sodium azide is recommended to avoid contamination (final concentration 0.05%-0.1%). It is toxic to cells and should be disposed of properly. Avoid repeated freeze-thaw cycles.

Clonality

Polyclonal

Ig Type

Rabbit IgG

Applications

ELISA, IHC-P

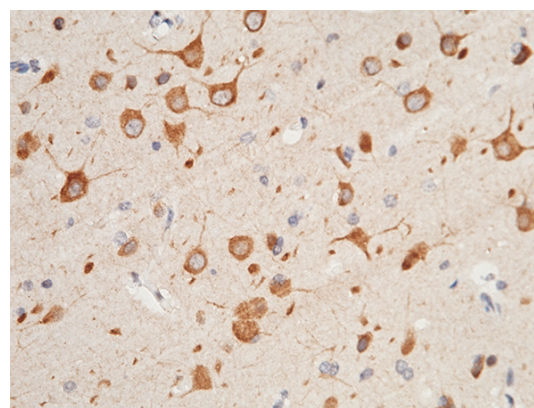
Dilutions

ELISA: 0.5-1.0 µg/mL

This antibody can be used at 0.5-1.0 µg/mL with the appropriate secondary reagents to detect Human CX3CL1. The detection limit for Human CX3CL1 is 0.0195 ng/well.

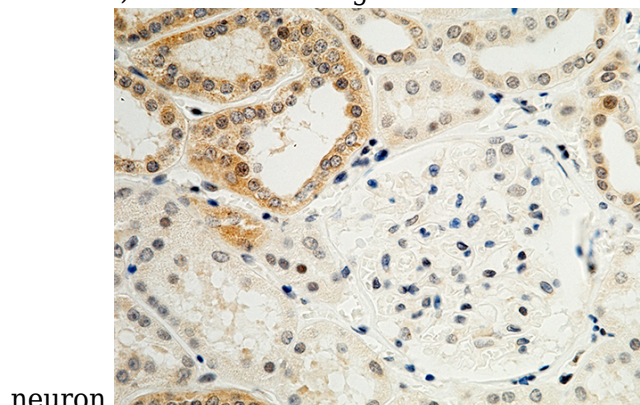
IHC-P: 0.1-2 µg/mL

Validations



Fractalkine / CX3CL1 Antibody, Rabbit PAb, Antigen Affinity Purified, Immunohistochemistry

Immunochemical staining of human CX3CL1 in human brain with rabbit polyclonal antibody (0.5 µg/mL, formalin-fixed paraffin embedded sections). Positive staining was localized to



neuron.

Fractalkine / CX3CL1 Antibody, Rabbit PAb,

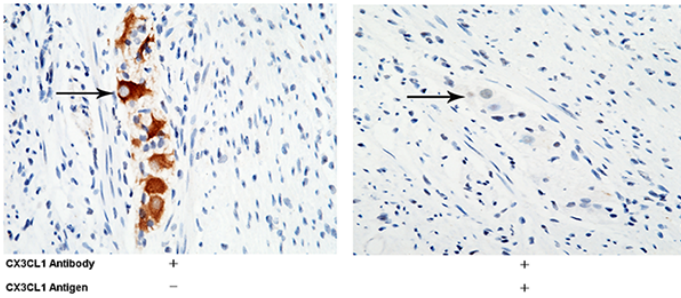
Anti-Fractalkine/CX3CL1 antibody



Catalog Number: 101942

Antigen Affinity Purified, Immunohistochemistry

Immunochemical staining of human CX3CL1 in human kidney with rabbit polyclonal antibody (0.5 µg/mL, formalin-fixed paraffin embedded sections).



Fractalkine / CX3CL1 Antibody, Rabbit PAb, Antigen Affinity Purified, Immunohistochemistry

Immunochemical staining of human CX3CL1 in human appendix with rabbit polyclonal antibody (0.5 µg/mL, formalin-fixed paraffin embedded sections). Positive staining was localized to neuron in myenteric nervous plexus. The left panel: tissue incubated with primary antibody; The right panel: tissue incubated with the mixture of primary antibody and antigen (recombinant protein).