

Catalog Number: 101841

Product name

Anti-ITGB1 / Integrin beta-1 / CD29 antibody

WB: 5-10 µg/ml

ICC/IF: 0.5-1.5 µg/mL

Specificity

Human Integrin beta 1/ITGB1

IP: 4-6 µg/mg of lysate

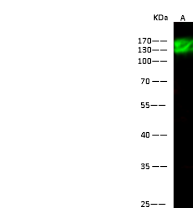
Antibody description

Rabbit polyclonal to ITGB1 / Integrin beta-1 / CD29

Validations

Preparation

Produced in rabbits immunized with a synthetic peptide corresponding to the N-terminus of the Human Integrin beta 1/ITGB1, and purified by antigen affinity chromatography.



Items	Lanes
Sample (Membrane Lysate)	A
Sample Volume (µg/Lane)	30
Gel	13% SDS-PAGE reducing gel
Recommended Concentration	5-10 µg/ml
Secondary Antibody	Dylight 800 labeled Antibody to Rabbit IgG (H+L), at 1:5000 dilution
	Developed using Odyssey imaging system.
Explanation	Predicted band size : 88 kDa Observed band size : 130 kDa

Formulation

0.2 µm filtered solution in PBS

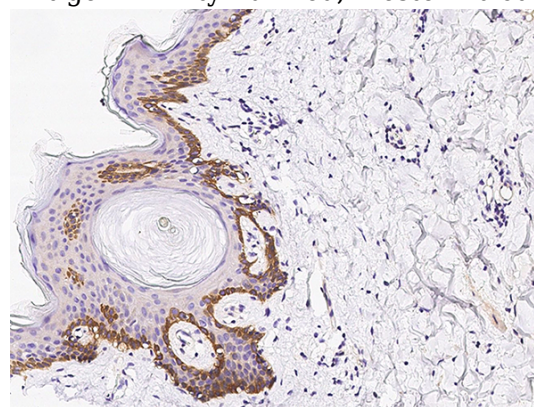
Integrin beta 1 / ITGB1 Antibody, Rabbit PAb, Antigen Affinity Purified, Western blot

Storage

This antibody can be stored at 2°C-8°C for one month without detectable loss of activity. Antibody products are stable for twelve months from date of receipt when stored at -20°C to -80°C.

Preservative-Free.

Sodium azide is recommended to avoid contamination (final concentration 0.05%-0.1%). It is toxic to cells and should be disposed of properly. Avoid repeated freeze-thaw cycles.



Integrin beta 1 / ITGB1 Antibody, Rabbit PAb, Antigen Affinity Purified, Immunohistochemistry

Clonality

Polyclonal

Immunochemical staining of human ITGB1 in human skin with rabbit polyclonal antibody (0.2 µg/mL, formalin-fixed paraffin embedded

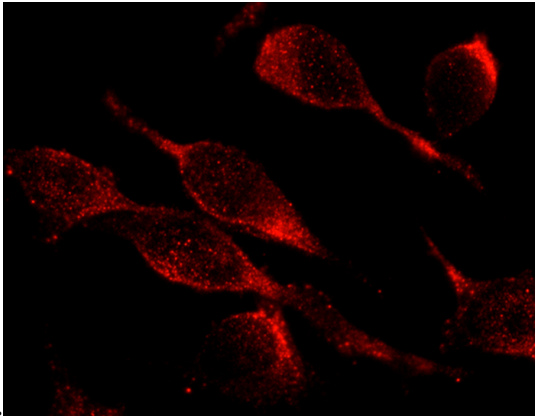
Ig Type

Rabbit IgG

Applications

WB, IHC-P, IF, IP, ICC/IF

Dilutions



Integrin beta 1 / ITGB1 Antibody, Rabbit PAb, Antigen Affinity Purified, Immunofluorescence

Immunofluorescence staining of ITGB1 in HeLa cells. Cells were fixed with 4% PFA, blocked with 10% serum, and incubated with rabbit anti-human ITGB1 polyclonal antibody (1 $\mu\text{g}/\text{ml}$) at 4°C overnight. Then cells were stained with the Alexa Fluor®594-conjugated Goat Anti-rabbit IgG secondary antibody (red). Positive staining was localized to cell membrane.

sections).