

Anti-GRIA2/GLUR2 antibody



Catalog Number: 101635

Product name

Anti-GRIA2/GLUR2 antibody

Specificity

Human GRIA2 / GLUR2

Antibody description

Rabbit polyclonal to GRIA2/GLUR2

Preparation

Produced in rabbits immunized with a synthetic peptide corresponding to the center region of the Human GRIA2 / GLUR2, and purified by antigen affinity chromatography.

Formulation

0.2 µm filtered solution in PBS

Storage

This antibody can be stored at 2°C-8°C for one month without detectable loss of activity. Antibody products are stable for twelve months from date of receipt when stored at -20°C to -80°C.

Preservative-Free.

Sodium azide is recommended to avoid contamination (final concentration 0.05%-0.1%). It is toxic to cells and should be disposed of properly. Avoid repeated freeze-thaw cycles.

Clonality

Polyclonal

Ig Type

Rabbit IgG

Applications

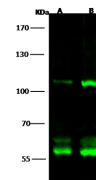
WB, IP

Dilutions

WB: 5-10 µg/ml

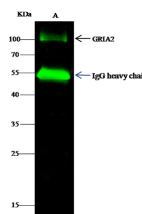
IP: 0.5-2 uL/mg of lysate

Validations



Lanes	A	B
Sample (Membrane Lysate)	HEK293	Hela
Sample Volume (µg/lane)	30	30
Gel	7.5% SDS-PAGE reducing gel	
Recommended Concentration	5-10 µg/ml	
Secondary Antibody	Dylight 800 labeled Antibody to Rabbit IgG (H+L), at 1:5000 dilution.	
Developed using Odyssey imaging system.		
Explanation	Predicted band size : 58 kDa Observed band size : 110 kDa Additional bands at : 63 kDa and 60 kDa (We are unsure as to the identity of these extra bands.)	

GRIA2 / GLUR2 Antibody, Rabbit PAb, Antigen Affinity Purified, Western blot



Lanes	A
Sample (Whole cell lysate)	Hela
Sample quantity	0.5 mg
IP antibody quantity	2 µg
Immunosorbent beads Protein G	60 µg
Gel	15% SDS-PAGE reducing gel
Primary antibody	KLU-SMCC-SinoA1157 antibody at 10 µg/ml
Secondary antibody	Dylight 800 labeled antibody to rabbit IgG (H+L), at 1:5000 dilution

GRIA2 / GLUR2 Antibody, Rabbit PAb, Antigen Affinity Purified, Immunoprecipitation