

# Anti-CCDC134 antibody



Catalog Number: 101577

## Product name

Anti-CCDC134 antibody

## Immunogen

[Human CCDC134 \(His Tag\) recombinant protein](#)

## Specificity

Human CCDC134

## Antibody description

Rabbit polyclonal to CCDC134

## Preparation

Produced in rabbits immunized with purified, recombinant Human CCDC134 (rh CCDC134; Q9H6E4; Met1-Leu229). CCDC134 specific IgG was purified by Human CCDC134 affinity chromatography.

## Formulation

0.2 µm filtered solution in PBS

## Storage

This antibody can be stored at 2°C-8°C for one month without detectable loss of activity. Antibody products are stable for twelve months from date of receipt when stored at -20°C to -80°C.

Preservative-Free.

Sodium azide is recommended to avoid contamination (final concentration 0.05%-0.1%). It is toxic to cells and should be disposed of properly. Avoid repeated freeze-thaw cycles.

## Clonality

Polyclonal

## Ig Type

Rabbit IgG

## Applications

ELISA, WB, IP

## Dilutions

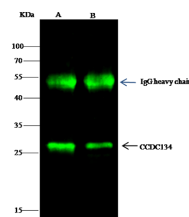
WB: 10-20 µg/mL

ELISA: 0.1-0.2 µg/mL

This antibody can be used at 0.1-0.2 µg/mL with the appropriate secondary reagents to detect Human CCDC134. The detection limit for Human CCDC134 is < 0.039 µg/well.

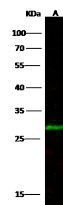
IP: 1-4 µg/mg of lysate

## Validations



| Items                      | Lanes | A   | B    |
|----------------------------|-------|---|------|
| Sample (whole cell lysate) |       | HepG2   | 293T |
| Sample quantity            |       | 0.5 mg  |      |
| IP antibody quantity       |       | 2 µg  |      |
| Protein G agarose          |       | 15 µl of 50% Protein G Agarose  |      |
| Gel                        |       | 13% SDS-PAGE reducing gel   |      |
| Primary antibody           |       | CCDC134-His antibody at 5 µg/ml                                       |      |
| Secondary antibody         |       | Dylight 800-labeled antibody to rabbit IgG (H+L), at 1:5000 dilution. |      |

CCDC134 Antibody, Rabbit PAb, Antigen Affinity Purified, Immunoprecipitation



| Items                                   | Lanes | A   |
|---|-------|---|
| Sample (whole cell lysate)              |       | H160  |
| Sample Volume (µg/lane)                 |       | 30  |
|   |       | 13% SDS-PAGE reducing gel   |
| Recommended Concentration               |       | 10-20 µg/ml   |
| Secondary Antibody                      |       | Dylight 800-labeled Antibody to Rabbit IgG (H+L), at 1:5000 dilution. |
| Developed using Odyssey imaging system. |       |   |
| Explanation                             |       | Predicted band size: 27 kDa<br>Observed band size: 27 kDa             |

CCDC134 Antibody, Rabbit PAb, Antigen Affinity Purified, Western blot