

Anti-PGDH/PHGDH antibody



Catalog Number: 101572

Product name

Anti-PGDH/PHGDH antibody

Immunogen

[Human PGDH/PHGDH \(His Tag\) recombinant protein](#)

Specificity

Human PGDH / PHGDH

Antibody description

Rabbit polyclonal to PGDH/PHGDH

Preparation

Produced in rabbits immunized with purified, recombinant Human PGDH / PHGDH (rh PGDH / PHGDH; O43175; Met1-Phe533). PGDH / PHGDH specific IgG was purified by Human PGDH / PHGDH affinity chromatography.

Formulation

0.2 µm filtered solution in PBS

Storage

This antibody can be stored at 2°C-8°C for one month without detectable loss of activity. Antibody products are stable for twelve months from date of receipt when stored at -20°C to -80°C.

Preservative-Free.

Sodium azide is recommended to avoid contamination (final concentration 0.05%-0.1%). It is toxic to cells and should be disposed of properly. Avoid repeated freeze-thaw cycles.

Clonality

Polyclonal

Ig Type

Rabbit IgG

Applications

ELISA, WB, IP

Dilutions

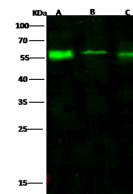
WB: 1-5 µg/ml

ELISA: 0.1-0.2 µg/ml

This antibody can be used at 0.1-0.2 µg/ml with the appropriate secondary reagents to detect Human PGDH / PHGDH.

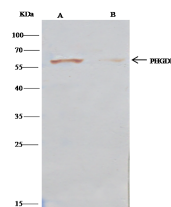
IP: 2-8 uL/mg of lysate

Validations



| Items | Lanes | A | B | C |
|----------------------------|-------|---|------|------|
| Sample (whole cell lysate) | | HeLa | A431 | Raji |
| Sample Volume (µg/lane) | | 30 | 30 | 30 |
| Gel | | 13% SDS-PAGE reducing gel | | |
| Recommended Concentration | | 10 µg/ml | | |
| Secondary Antibody | | Dylight 800 labeled Antibody to Rabbit IgG (H+L), at 1:5000 dilution. | | |
| | | Developed using Odyssey imaging system. | | |
| Explanation | | Predicted band size : 57 kDa Observed band size : 57 kDa | | |

PGDH / PHGDH Antibody, Rabbit PAb, Antigen Affinity Purified, Western blot



| Items | Lanes | A | B |
|-------------------------------|-------|--|------|
| Sample (whole cell lysate) | | HeLa | A431 |
| Sample quantity | | 0.5 mg | |
| IP antibody quantity | | 4 µL | |
| Immunosorbent beads Protein G | | 60 mg | |
| Gel | | 13% SDS-PAGE reducing gel | |
| Primary antibody | | PHGDH-HIS antibody at 10 µg/ml | |
| Secondary antibody | | Clon-Block IP Detection Reagent (HRP) at 1:500 dilution. | |

PGDH / PHGDH Antibody, Rabbit PAb, Antigen Affinity Purified, Immunoprecipitation