

Anti-STAT1 antibody



Catalog Number: 101392

Product name

Anti-STAT1 antibody

Specificity

Human STAT1

Antibody description

Rabbit polyclonal to STAT1

Preparation

Produced in rabbits immunized with a synthetic peptide corresponding to the center region of the Human STAT1, and purified by antigen affinity chromatography.

Formulation

0.2 µm filtered solution in PBS

Storage

This antibody can be stored at 2°C-8°C for one month without detectable loss of activity. Antibody products are stable for twelve months from date of receipt when stored at -20°C to -80°C.

Preservative-Free.

Sodium azide is recommended to avoid contamination (final concentration 0.05%-0.1%). It is toxic to cells and should be disposed of properly. Avoid repeated freeze-thaw cycles.

Clonality

Polyclonal

Ig Type

Rabbit IgG

Applications

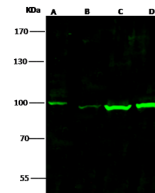
WB, IP

Dilutions

WB: 5-10 µg/ml

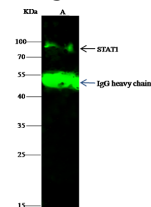
IP: 0.5-2 uL/mg of lysate

Validations



Lanes	A	B	C	D
Items	A431	Jurkat	K562	MCF7
Sample (whole cell lysate)	A431	Jurkat	K562	MCF7
Sample Volume (µg/lane)	30	30	30	30
Gel	7.5% SDS-PAGE reducing gel			
Recommended Concentration	5-10 µg/ml			
Secondary Antibody	Dylight 800-labeled Antibody To Rabbit IgG (H+L), at 1:5000 dilution.			
	Developed using Odyssey imaging system.			
Explanation	Predicted band size : 87 kDa Observed band size : 100 kDa			

STAT1 Antibody, Rabbit PAb, Antigen Affinity



Lanes	A
Items	Hela
Sample (whole cell lysate)	Hela
Sample quantity	0.5 mg
IP antibody quantity	2 µg
Immunomagnetic beads Protein G	60 ng
Gel	15% SDS-PAGE reducing gel
Primary antibody	KLH-SMCC-SINO1080 antibody at 10 µg/ml
Secondary antibody	Dylight 800-labeled antibody to rabbit IgG (H+L), at 1:5000 dilution

Purified, Western blot

STAT1 Antibody, Rabbit PAb, Antigen Affinity

Purified, Immunoprecipitation