

# Anti-KLK8/Kallikrein 8 antibody



Catalog Number: 101366

## Product name

Anti-KLK8/Kallikrein 8 antibody

## Immunogen

[Human KLK8/Kallikrein 8 \(His Tag\) recombinant protein](#)

## Specificity

Human KLK8 / Kallikrein 8

## Antibody description

Rabbit monoclonal to KLK8/Kallikrein 8

## Preparation

This antibody was obtained from a rabbit immunized with purified, recombinant Human KLK8 / Kallikrein 8 (rh KLK8 / Kallikrein 8; O60259-1; Met1-Gly260).

## Formulation

0.2 µm filtered solution in PBS

## Storage

This antibody can be stored at 2°C-8°C for one month without detectable loss of activity. Antibody products are stable for twelve months from date of receipt when stored at -20°C to -80°C. Preservative-Free.

Sodium azide is recommended to avoid contamination (final concentration 0.05%-0.1%). It is toxic to cells and should be disposed of properly. Avoid repeated freeze-thaw cycles.

## Clonality

Monoclonal

## Ig Type

Rabbit IgG

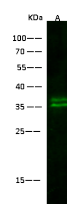
## Applications

WB

## Dilutions

WB: 5-10 µg/ml

## Validations



Lanes	
Items	A
Sample (whole cell lysate)	A431
Sample Volume (µg/lane)	30
Gel	13% SDS-PAGE reducing gel
Recommended Concentration	10-20 µg/ml
Secondary Antibody	Dylight 800 labeled Antibody to Rabbit IgG (H+L), at 1:5000 dilution.
Developed using Odyssey imaging system.	
Explanation	Predicted band size : 28 kDa Observed band size : 35 kDa

KLK8 / Kallikrein 8 Antibody, Rabbit MAb, Western blot