

Anti-KRT5/Cytokeratin5 antibody



Catalog Number: 101354

Product name

Anti-KRT5/Cytokeratin5 antibody

Specificity

Human Cytokeratin 5/KRT5

Antibody description

Rabbit monoclonal to KRT5/Cytokeratin5

Preparation

This antibody was obtained from a rabbit immunized with a synthetic peptide corresponding to the center region of the Human Cytokeratin 5/KRT5.

Formulation

0.2 µm filtered solution in PBS

Storage

This antibody can be stored at 2°C-8°C for one month without detectable loss of activity. Antibody products are stable for twelve months from date of receipt when stored at -20°C to -80°C. Preservative-Free.

Sodium azide is recommended to avoid contamination (final concentration 0.05%-0.1%). It is toxic to cells and should be disposed of properly. Avoid repeated freeze-thaw cycles.

Clonality

Monoclonal

Ig Type

Rabbit IgG

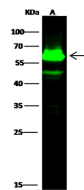
Applications

WB

Dilutions

WB: 1-10 µg/ml

Validations



Items	Lanes	A
Sample (whole cell lysate)		A431
Sample Volume (µg/lane)		30
Gel		13% SDS-PAGE reducing gel
Recommended Concentration		1-10 µg/ml
Secondary Antibody		Dylight 800 labeled Antibody to Rabbit IgG (H+L), at 1:5000 dilution.
Developed using Odyssey imaging system.		
Explanation		Predicted band size : 62 kDa Observed band size : 62 kDa Additional bands at : 47 kDa (We are unsure as to the identity of these extra bands.)

Cytokeratin 5 / KRT5 Antibody, Rabbit MAb, Western blot

Immunochemical staining of human UBE4A in human breast carcinoma with rabbit polyclonal antibody (0.5 µg/mL, formalin-fixed paraffin embedded sections).