

Anti-S100A11 / S100C antibody



Catalog Number: 101302

Product name

Anti-S100A11 / S100C antibody

Immunogen

[Human S100A11 / S100C recombinant protein](#)

Specificity

Human S100A11 / S100C

Antibody description

Rabbit polyclonal to S100A11 / S100C

Preparation

Produced in rabbits immunized with purified, recombinant Human S100A11 / S100C (rh S100A11 / S100C; NP_005611.1; Met1-Thr105). S100A11 / S100C specific IgG was purified by Human S100A11 / S100C affinity chromatography.

Formulation

0.2 µm filtered solution in PBS

Storage

This antibody can be stored at 2°C-8°C for one month without detectable loss of activity. Antibody products are stable for twelve months from date of receipt when stored at -20°C to -80°C.

Preservative-Free.

Sodium azide is recommended to avoid contamination (final concentration 0.05%-0.1%). It is toxic to cells and should be disposed of properly. Avoid repeated freeze-thaw cycles.

Clonality

Polyclonal

Ig Type

Rabbit IgG

Applications

ELISA, WB, IP

Dilutions

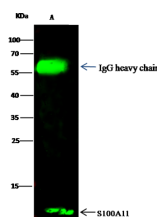
WB: 2-10 µg/mL

ELISA: 0.1-0.2 µg/mL

This antibody can be used at 0.1-0.2 µg/mL with the appropriate secondary reagents to detect Human S100A11 / S100C. The detection limit for Human S100A11 / S100C is < 0.039 ng/well.

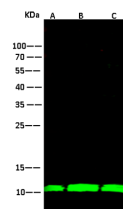
IP: 1-4 µg/mg of lysate

Validations



Lanes	A
Sample (whole cell lysate)	Hela
Sample quantity	0.5 mg
IP antibody quantity	2 µg
Protein G agarose	15 µl of 50% Protein G Agarose
Gel	13% SDS-PAGE reducing gel
Primary antibody	S100A11 antibody at 5 µg/ml
Secondary antibody	Dylight 800-labeled antibody to rabbit IgG (H+L), at 1:5000 dilution

S100A11 / S100C Antibody, Rabbit PAb, Antigen Affinity Purified, Immunoprecipitation



Lanes	A	B	C
Sample (whole cell lysate)	Hela	SKBR3	PC-3
Sample Volume (µg/lane)	30	30	30
Gel	13% SDS-PAGE reducing gel		
Recommended Concentration	2-10 µg/ml		
Secondary Antibody	Dylight 800-labeled Antibody To Rabbit IgG (H+L), at 1:5000 dilution.		
Explanation	Developed using Odyssey imaging system.		
	Predicted band size : 11 kDa		
	Observed band size : 11 kDa		

S100A11 / S100C Antibody, Rabbit PAb, Antigen Affinity Purified, Western blot