

Anti-CCR2 antibody



Catalog Number: 101299

Product name

Anti-CCR2 antibody

Specificity

Human cd192

Antibody description

Rabbit polyclonal to CCR2

Preparation

Produced in rabbits immunized with a synthetic peptide corresponding to the N-terminus of the human cd192, and purified by antigen affinity chromatography.

Formulation

0.2 µm filtered solution in PBS with 5% trehalose

Storage

This antibody can be stored at 2°C-8°C for one month without detectable loss of activity. Antibody products are stable for twelve months from date of receipt when stored at -20°C to -80°C.

Preservative-Free.

Sodium azide is recommended to avoid contamination (final concentration 0.05%-0.1%). It is toxic to cells and should be disposed of

properly. Avoid repeated freeze-thaw cycles.

Clonality

Polyclonal

Ig Type

Rabbit IgG

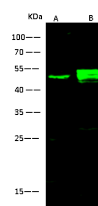
Applications

WB

Dilutions

WB: 5-10 µg/ml

Validations



Items	Lanes	A	B
Sample (Membrane Lysate)		Hela	A431
Sample Volume (µg/lane)		30	30
Gel	13% SDS-PAGE reducing gel		
Recommended Concentration	5-10 µg/ml		
Secondary Antibody	Dylight 800-labeled Antibody To Rabbit IgG (H+L), at 1:5000 dilution.		
Developed using Odyssey imaging system.			
Explanation	Predicted band size : 42 kDa Observed band size : 50 kDa		

cd192 Antibody, Rabbit PAb, Antigen Affinity Purified, Western blot