

Anti-HER2/ErbB2 antibody



Catalog Number: 101268

Product name

Anti-HER2/ErbB2 antibody

Immunogen

[Rat HER2/ErbB2 \(His Tag\) recombinant protein](#)

Specificity

Rat HER2 / ErbB2

Antibody description

Rabbit polyclonal to HER2/ErbB2

Preparation

Produced in rabbits immunized with purified, recombinant Rat HER2 / ErbB2 (rR HER2 / ErbB2; AAH61863.1; Met4-Thr656). HER2 / ErbB2 specific IgG was purified by Rat HER2 / ErbB2 affinity chromatography.

Formulation

0.2 µm filtered solution in PBS

Storage

This antibody can be stored at 2°C-8°C for one month without detectable loss of activity. Antibody products are stable for twelve months from date of receipt when stored at -20°C to -80°C.

Preservative-Free.

Sodium azide is recommended to avoid contamination (final concentration 0.05%-0.1%). It is toxic to cells and should be disposed of properly. Avoid repeated freeze-thaw cycles.

Clonality

Polyclonal

Ig Type

Rabbit IgG

Applications

ELISA, WB, IP

Dilutions

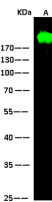
WB: 2-10 µg/ml

ELISA: 0.1-0.2 µg/ml

This antibody can be used at 0.1-0.2 µg/ml with the appropriate secondary reagents to detect Rat HER2 / ErbB2. The detection limit for Rat HER2 / ErbB2 is approximately 0.00245 ng/well.

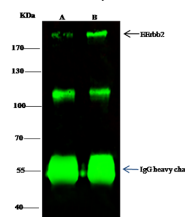
IP: 1-4 µg/mg of lysate

Validations



Items	Lanes	A
Sample (whole cell lysate)		SKBR3
Sample Volume (µg/lane)		30
Gel		13% SDS-PAGE reducing gel
Recommended Concentration		2-10 µg/ml
Secondary Antibody		Dylight 800-labeled Antibody To Rabbit IgG (H+L), at 1:5000 dilution.
		Developed using Odyssey imaging system.
Explanation		Predicted band size : 138 kDa Observed band size : 190 kDa

HER2 / ErbB2 Antibody, Rabbit PAb, Antigen Affinity Purified, Western blot



Items	Lanes	A	B
Sample (whole cell lysate)		H124	MCF-7
Sample quantity		0.5 µg	
IP antibody quantity		2 µg	
Protein G agarose		1.5 µl of 50% Protein G Agarose	
Gel		13% SDS-PAGE reducing gel	
Primary antibody		antiErbB2-His antibody at 1.5 µg/ml	
Secondary antibody		Dylight 800-labeled antibody to rabbit IgG (H+L), at 1:5000 dilution	

HER2 / ErbB2 Antibody, Rabbit PAb, Antigen Affinity Purified, Immunoprecipitation

Immunochemical staining of human CREB1 in human prostate with rabbit polyclonal antibody (1 µg/mL, formalin-fixed paraffin embedded

Anti-HER2/ErbB2 antibody



Catalog Number: 101268

sections).