

Anti-FEN1 antibody



Catalog Number: 101252

Product name

Anti-FEN1 antibody

Specificity

Human FEN1

Antibody description

Rabbit polyclonal to FEN1

Preparation

Produced in rabbits immunized with a synthetic peptide corresponding to the C-terminus of the human FEN1, and purified by antigen affinity chromatography.

Formulation

0.2 μ m filtered solution in PBS

Storage

This antibody can be stored at 2°C-8°C for one month without detectable loss of activity. Antibody products are stable for twelve months from date of receipt when stored at -20°C to -80°C.

Preservative-Free.

Sodium azide is recommended to avoid contamination (final concentration 0.05%-0.1%). It is toxic to cells and should be disposed of properly. Avoid repeated freeze-thaw cycles.

Clonality

Polyclonal

Ig Type

Rabbit IgG

Applications

WB, IHC-P, IF, IP, ICC/IF

Dilutions

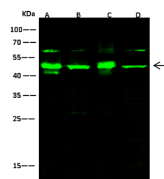
WB: 2-10 μ g/ml

IHC-P: 0.1-2 μ g/mL

ICC/IF: 0.5-1.5 μ g/mL

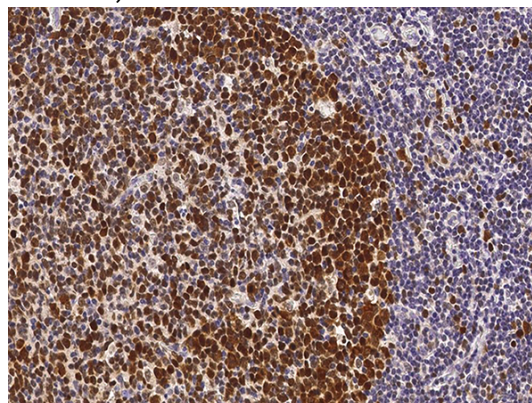
IP: 1-4 μ g/mg of lysate

Validations



Items	Lanes	A	B	C	D
Sample (whole cell lysate)		HepG2	Jurkat	HeLa	Raji
Sample Volume (μ g/lane)		30	30	30	30
Gel	13% SDS-PAGE reducing gel				
Recommended Concentration	2-10 μ g/ml				
Secondary Antibody	Dylight 800-labeled Antibody to Rabbit IgG (H+L), at 1:5000 dilution.				
	Developed using Odyssey imaging system.				
Explanation	Predicted band size : 43 kDa Observed band size : 43 kDa Additional bands at : 62 kDa and 42 kDa (We are unsure as to the identity of these extra bands.)				

FEN1 Antibody, Rabbit PAB, Antigen Affinity Purified, Western blot



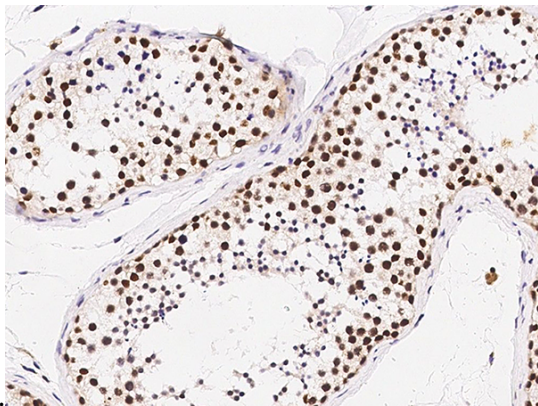
FEN1 Antibody, Rabbit PAB, Antigen Affinity Purified, Immunohistochemistry

Immunochemical staining of human FEN1 in human tonsil with rabbit polyclonal antibody (0.5 μ g/mL, formalin-fixed paraffin embedded)

Anti-FEN1 antibody



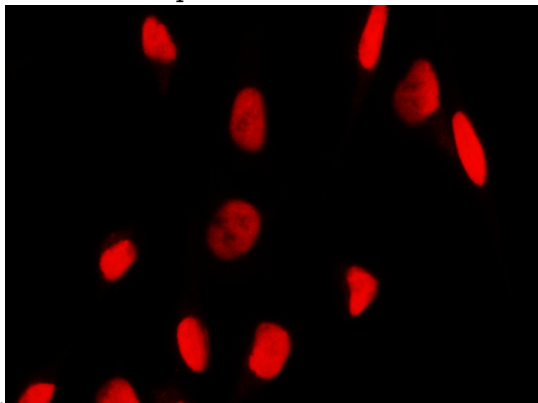
Catalog Number: 101252



sections).

FEN1 Antibody, Rabbit PAb, Antigen Affinity Purified, Immunohistochemistry

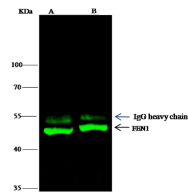
Immunochemical staining of human FEN1 in human testis with rabbit polyclonal antibody (0.5 µg/mL, formalin-fixed paraffin embedded



sections).

FEN1 Antibody, Rabbit PAb, Antigen Affinity Purified, Immunofluorescence

Immunofluorescence staining of FEN1 in HeLa cells. Cells were fixed with 4% PFA, permeabilized with 0.3% Triton X-100 in PBS, blocked with 10% serum, and incubated with rabbit anti-human FEN1 polyclonal antibody (1 µg/ml) at 4°C overnight. Then cells were stained with the Alexa Fluor®594-conjugated Goat Anti-rabbit IgG secondary antibody (red) Positive staining was



Item	Lane	A	B
Sample (whole cell lysate)		HeLa	K562
Sample quantity		0.5 mg	
IP antibody quantity		2 µg	
Protein G agarose		1.5 µl of 50% Protein G Agarose	
Gel		13% SDS-PAGE reducing gel	
Primary antibody		KLE1-SMCC-sinoA916 antibody at 10 µg/ml	
Secondary antibody		Dylight 800-labeled antibody to rabbit IgG (01-1), at 1:5000 dilution.	

localized to nucleus.

FEN1 Antibody, Rabbit PAb, Antigen Affinity Purified, Immunoprecipitation