

Anti-Legumain antibody



Catalog Number: 101248

Product name

Anti-Legumain antibody

Immunogen

[Sus scrofa \(Pig\) Legumain \(His Tag\) recombinant protein](#)

Specificity

Sus scrofa (Pig) Legumain / LGMN

Antibody description

Rabbit polyclonal to Legumain

Preparation

Produced in rabbits immunized with purified, recombinant Sus scrofa (Pig) Legumain / LGMN (XP_001927117.4; Met1-Tyr433). Legumain / LGMN specific IgG was purified by Sus scrofa (Pig) Legumain / LGMN affinity chromatography.

Formulation

0.2 µm filtered solution in PBS

Storage

This antibody can be stored at 2°C-8°C for one month without detectable loss of activity. Antibody products are stable for twelve months from date of receipt when stored at -20°C to -80°C.

Preservative-Free.

Sodium azide is recommended to avoid contamination (final concentration 0.05%-0.1%). It is toxic to cells and should be disposed of properly. Avoid repeated freeze-thaw cycles.

Clonality

Polyclonal

Ig Type

Rabbit IgG

Applications

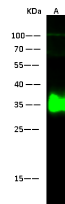
WB, IP

Dilutions

WB: 2-10 µg/ml

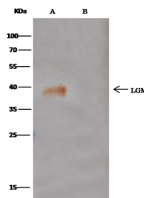
IP: 4-6 µg/mg of lysate

Validations



Items	Lanes	A
Sample		Mouse kidney tissue lysate
Sample Volume (µg/lane)		30
Gel		13% SDS-PAGE reducing gel
Recommended Concentration		2-10 µg/ml
Secondary Antibody		Dylight 800-labeled Antibody To Rabbit IgG (H+L), at 1:5000 dilution.
		Developed using Odyssey imaging system.
Explanation		Predicted band size : 49 kDa Observed band size : 35 kDa

Legumain / LGMN Antibody, Rabbit PAb, Antigen Affinity Purified, Western blot



Items	Lanes	A	B
Sample (wholecell lysate)		HeLa	
Sample quantity		0.5 mg	
IP antibody type		SusLGMN-His-IP02	Rabbit Blank IgG
IP antibody quantity		2 µg	
Protein G agarose		15 µl of 50% Protein G Agarose	
Gel		13% SDS-PAGE reducing gel	
Primary antibody		SusLGMN-His antibody at 5 µg/ml	
Secondary antibody		Cryo-Block IP Detection Reagent (HRP) at 1:1000 dilution	

Legumain / LGMN Antibody, Rabbit PAb, Antigen Affinity Purified, Immunoprecipitation

Immunochemical staining of human GJA1 in mouse heart with rabbit polyclonal antibody (0.05 µg/mL, formalin-fixed paraffin embedded sections).