

Anti-HER2/ErbB2 antibody



Catalog Number: 101222

Product name

Anti-HER2/ErbB2 antibody

Specificity

Human ERBB2

Antibody description

Rabbit polyclonal to HER2/ErbB2

Preparation

Produced in rabbits immunized with a synthetic peptide corresponding to the center region of the human ERBB2, and purified by antigen affinity chromatography.

Formulation

0.2 µm filtered solution in PBS with 5% trehalose

Storage

This antibody can be stored at 2°C-8°C for one month without detectable loss of activity. Antibody products are stable for twelve months from date of receipt when stored at -20°C to -80°C.

Preservative-Free.

Sodium azide is recommended to avoid contamination (final concentration 0.05%-0.1%). It is toxic to cells and should be disposed of

properly. Avoid repeated freeze-thaw cycles.

Clonality

Polyclonal

Ig Type

Rabbit IgG

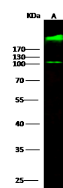
Applications

WB

Dilutions

WB: 10-20 µg/ml

Validations



| Items | Lanes | A |
|---|-------|--|
| Sample (whole cell lysate) | | SKBR3 |
| Sample Volume (µg/lane) | | 30 |
| Gel | | 13% SDS-PAGE reducing gel |
| Recommended Concentration | | 10-20 µg/ml |
| Secondary Antibody | | Dylight 600 labeled Antibody to Rabbit IgG (H+L) at 1:5000 dilution. |
| Developed using Odyssey imaging system. | | |
| Explanation | | Predicted band size : 138 kDa Observed band size : 230 kDa Additional bands at : 100 kDa (We are unsure as to the identity of these extra bands. They are possible non-specific bindings). |

ERBB2 Antibody, Rabbit PAb, Antigen Affinity Purified, Western blot