

# Anti-KRT14 antibody



Catalog Number: 101179

## Product name

Anti-KRT14 antibody

## Specificity

Human Cytokeratin 14

## Antibody description

Rabbit monoclonal to KRT14

## Preparation

This antibody was obtained from a rabbit immunized with purified, a synthetic peptide corresponding to the N-terminus of the human Cytokeratin 14.

## Formulation

0.2 µm filtered solution in PBS with 5% trehalose

## Storage

This antibody can be stored at 2°C-8°C for one month without detectable loss of activity. Antibody products are stable for twelve months from date of receipt when stored at -20°C to -80°C.

Preservative-Free.

Sodium azide is recommended to avoid contamination (final concentration 0.05%-0.1%). It is toxic to cells and should be disposed of

properly. Avoid repeated freeze-thaw cycles.

## Clonality

Monoclonal

## Ig Type

Rabbit IgG

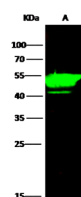
## Applications

WB

## Dilutions

WB: 0.2-1 µg/mL

## Validations



Items	Lanes	A
Sample (whole cell lysate)		A431
Sample Volume (µg/lane)		30
Gel		13% SDS-PAGE reducing gel
Recommended Concentration		0.2-1 µg/ml
Secondary Antibody		Dylight 800 labeled Antibody To Rabbit IgG (H+L), at 1:5000 dilution.

KRT14 / Cytokeratin 14 Antibody, Rabbit MAb, Western blot