

Anti-PSCA antibody



Catalog Number: 101118

Product name

Anti-PSCA antibody

Specificity

Human PSCA

Antibody description

Rabbit polyclonal to PSCA

Preparation

Produced in rabbits immunized with a synthetic peptide corresponding to the center region of the human PSCA, and purified by antigen affinity chromatography.

Formulation

0.2 µm filtered solution in PBS

Storage

This antibody can be stored at 2°C-8°C for one month without detectable loss of activity. Antibody products are stable for twelve months from date of receipt when stored at -20°C to -80°C.

Preservative-Free.

Sodium azide is recommended to avoid contamination (final concentration 0.05%-0.1%). It is toxic to cells and should be disposed of

properly. Avoid repeated freeze-thaw cycles.

Clonality

Polyclonal

Ig Type

Rabbit IgG

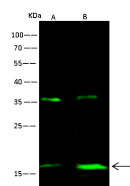
Applications

WB

Dilutions

WB: 5-10 µg/ml

Validations



Items	Lanes	A	B
Sample (Membrane lysate)		HepG2	293T
Sample Volume (µg/lane)		30	30
Gel		13% SDS-PAGE reducing gel	
Recommended Concentration		5-10 µg/ml	
Secondary Antibody		Dylight 800 labeled Antibody To Rabbit IgG (1:41), at 1:5000 dilution	
Developed using Odyssey imaging system.			
Explanation		Predicted band size: 13 kDa Observed band size: 17 kDa Additional bands at: 35 kDa [We are unsure as to the identity of these extra bands. They are possible non-specific bindings].	

PSCA Antibody, Rabbit PAb, Antigen Affinity Purified, Western blot