

# Anti-KIR3DL3 / CD158z antibody



Catalog Number: 101072

## Product name

Anti-KIR3DL3 / CD158z antibody

## Specificity

Human KIR3DL3 / CD158z

## Antibody description

Rabbit polyclonal to KIR3DL3 / CD158z

## Preparation

Produced in rabbits immunized with a synthetic peptide corresponding to the C-terminus of the human KIR3DL3 / CD158z, and purified by antigen affinity chromatography.

## Formulation

0.2 µm filtered solution in PBS

## Storage

This antibody can be stored at 2°C-8°C for one month without detectable loss of activity. Antibody products are stable for twelve months from date of receipt when stored at -20°C to -80°C.

Preservative-Free.

Sodium azide is recommended to avoid contamination (final concentration 0.05%-0.1%). It is toxic to cells and should be disposed of properly. Avoid repeated freeze-thaw cycles.

## Clonality

Polyclonal

## Ig Type

Rabbit IgG

## Applications

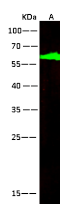
WB, IHC-P

## Dilutions

WB: 1-10 µg/ml

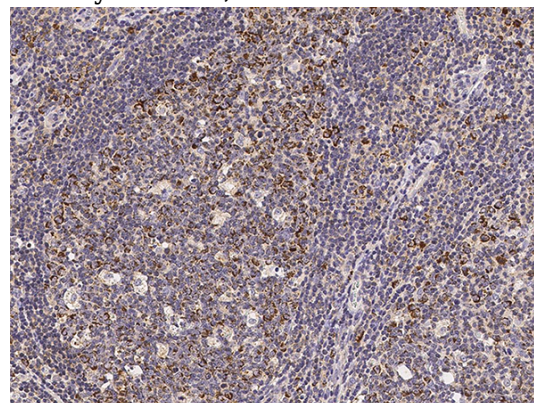
IHC-P: 0.1-2 µg/mL

## Validations



Items	Lanes
Sample (Membrane lysate)	A
Sample Volume (µg/lane)	K562 30
Cell	13% SDS-PAGE reducing gel
Recommended Concentration	1-10 µg/ml
Secondary Antibody	Dylight 800-labeled Antibody to Rabbit IgG (H+L), at 1:5000 dilution. Developed using Odyssey imaging system.
Explanation	Predicted band size : 45 kDa Observed band size : 62 kDa

KIR3DL3 / CD158z Antibody, Rabbit PAb, Antigen Affinity Purified, Western blot



KIR3DL3 / CD158z Antibody, Rabbit PAb, Antigen Affinity Purified, Immunohistochemistry

Immunochemical staining of human KIR3DL3 in human tonsil with rabbit polyclonal antibody (0.5 µg/mL, formalin-fixed paraffin embedded sections).