

# Anti-ATOX1 antibody



Catalog Number: 101042

## Product name

Anti-ATOX1 antibody

## Immunogen

[Human ATOX1 \(His Tag\) recombinant protein](#)

## Specificity

Human ATOX1

## Antibody description

Rabbit polyclonal to ATOX1

## Preparation

Produced in rabbits immunized with purified, recombinant Human ATOX1 (rh ATOX1; NP\_004036.1; Met1-Glu68). ATOX1 specific IgG was purified by Human ATOX1 affinity chromatography.

## Formulation

0.2 µm filtered solution in PBS

## Storage

This antibody can be stored at 2°C-8°C for one month without detectable loss of activity. Antibody products are stable for twelve months from date of receipt when stored at -20°C to -80°C.

Preservative-Free.

Sodium azide is recommended to avoid contamination (final concentration 0.05%-0.1%). It is toxic to cells and should be disposed of properly. Avoid repeated freeze-thaw cycles.

## Clonality

Polyclonal

## Ig Type

Rabbit IgG

## Applications

ELISA, WB, IHC-P

## Dilutions

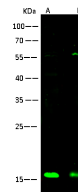
WB: 5-10 µg/ml

ELISA: 0.1-0.2 µg/mL

This antibody can be used at 0.1-0.2 µg/mL with the appropriate secondary reagents to detect Human ATOX1. The detection limit for Human ATOX1 is < 0.039 ng/well.

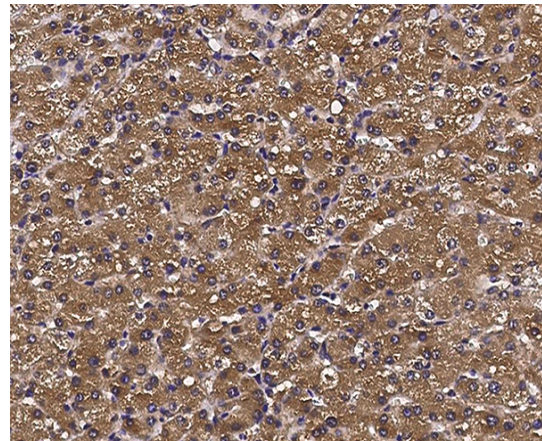
IHC-P: 0.1-2 µg/ml

## Validations



Items \ Lanes	A	B
Sample (whole cell lysate)	Hela	293T
Sample Volume (µg/lane)	30	30
Gel	13% SDS-PAGE reducing gel	
Recommended Concentration	5-10 µg/ml	
Secondary Antibody	Dylight 800 labeled Antibody To Rabbit IgG (H+L) at 1:5000 dilution	
Developed using Odyssey imaging system		
Explanation	Predicted band size : 7 kDa Observed band size : 16 kDa Additional bands at : 55 kDa (We are unsure as to the identity of these extra bands. They are possible non-specific bindings)	

ATOX1 Antibody, Rabbit PAb, Antigen Affinity Purified, Western blot



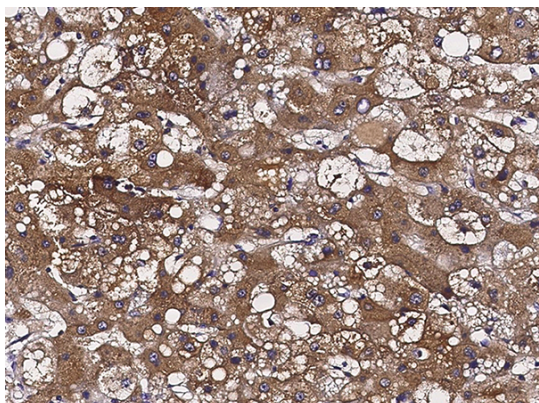
ATOX1 Antibody, Rabbit PAb, Antigen Affinity Purified, Immunohistochemistry

# Anti-ATOX1 antibody



Catalog Number: 101042

---



ATOX1 Antibody, Rabbit PAb, Antigen Affinity Purified, Immunohistochemistry