

# Anti-APEX1/AP/APEX/Ref-1 antibody



Catalog Number: 101040

## Product name

Anti-APEX1/AP/APEX/Ref-1 antibody

WB: 2-10 µg/ml

IHC-P: 0.1-2 µg/mL

## Specificity

Human APEX1 / AP / APEX / Ref-1

ICC/IF: 0.5-1.5 µg/mL

IP: 0.5-2 uL/mg of lysate

## Antibody description

Rabbit polyclonal to APEX1/AP/APEX/Ref-1

## Validations

## Preparation

Produced in rabbits immunized with a synthetic peptide corresponding to the center region of the Human APEX1 / AP / APEX / Ref-1, and purified by antigen affinity chromatography.

## Formulation

0.2 µm filtered solution in PBS

## Storage

This antibody can be stored at 2°C-8°C for one month without detectable loss of activity. Antibody products are stable for twelve months from date of receipt when stored at -20°C to -80°C.

Preservative-Free.

Sodium azide is recommended to avoid contamination (final concentration 0.05%-0.1%). It is toxic to cells and should be disposed of properly. Avoid repeated freeze-thaw cycles.

## Clonality

Polyclonal

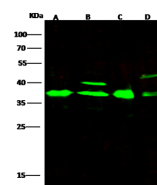
## Ig Type

Rabbit IgG

## Applications

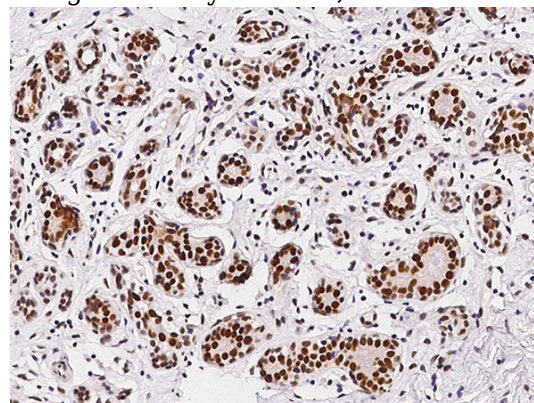
WB, IHC-P, IF, IP, ICC/IF

## Dilutions



Lanes	A	B	C	D
Sample (whole cell lysate)	A549	K562	HepG2	A431
Sample Volume (µg/lane)	30	30	30	30
Gel	13% SDS-PAGE reducing gel			
Recommended Concentration	2-10 µg/ml			
Secondary Antibody	Dylight 800-labeled Antibody to Rabbit IgG (H+L), at 1:5000 dilution.			
Explanation	Developed using Odyssey imaging system. Predicted band size: 36 kDa Observed band size: 37 kDa Additional bands at: 43 kDa and 40 kDa (We are unsure as to the identity of these extra bands.)			

APEX1 / AP / APEX / Ref-1 Antibody, Rabbit PAb, Antigen Affinity Purified, Western blot



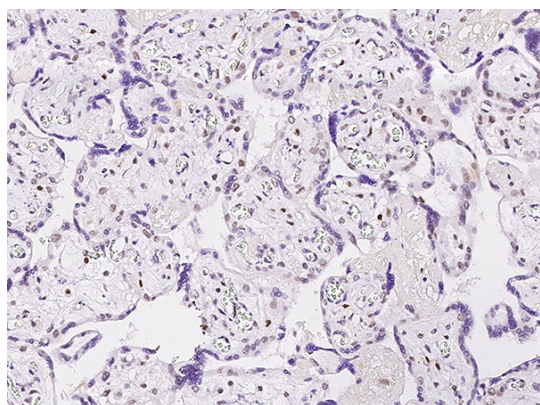
APEX1 / AP / APEX / Ref-1 Antibody, Rabbit PAb, Antigen Affinity Purified, Immunohistochemistry

Immunochemical staining of human APEX1 in human breast with rabbit polyclonal antibody (0.5 µg/mL, formalin-fixed paraffin embedded)

# Anti-APEX1/AP/APEX/Ref-1 antibody



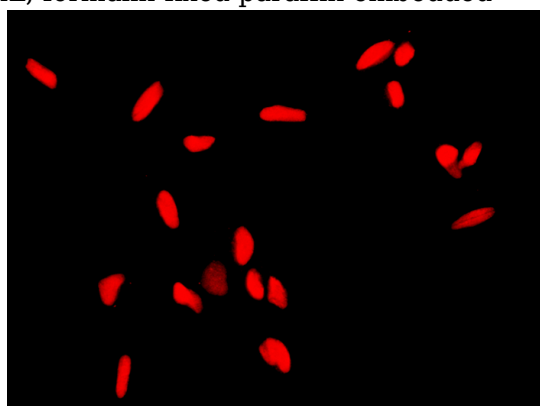
Catalog Number: 101040



sections).

APEX1 / AP / APEX / Ref-1 Antibody, Rabbit PAb,  
Antigen Affinity Purified, Immunohistochemistry

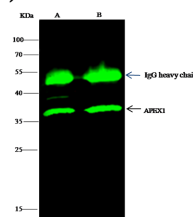
Immunochemical staining of human APEX1 in  
human placenta with rabbit polyclonal antibody  
(0.5 µg/mL, formalin-fixed paraffin embedded



sections).

APEX1 / AP / APEX / Ref-1 Antibody, Rabbit PAb,  
Antigen Affinity Purified, Immunofluorescence

Immunofluorescence staining of APEX1 in HeLa  
cells. Cells were fixed with 4% PFA, blocked with  
10% serum, and incubated with rabbit anti-human  
APEX1 polyclonal antibody (1 µg/ml) at 4°C  
overnight. Then cells were stained with the Alexa  
Fluor® 594-conjugated Goat Anti-rabbit IgG  
secondary antibody (green) Positive staining was



Lanes	A	B
Item		
Sample (whole cell lysate)	A549	HepG2
Sample quantity	0.5 mg	
IP antibody quantity	2 µg	
Immunoprecipitation beads (Protein G)	60 µg	
Gel	15% SDS-PAGE reducing gel	
Primary antibody	KLI1-SMCC-anti-A01 antibody at 10 µg/ml	
Secondary antibody	Dylight 800-labeled antibody to rabbit IgG (D1-1), at 1:5000 dilution	

localized to nucleus.

APEX1 / AP / APEX / Ref-1 Antibody, Rabbit PAb,  
Antigen Affinity Purified, Immunoprecipitation