

# Anti-PKLR/Pyruvate kinase 1 antibody



Catalog Number: 101000

## Product name

Anti-PKLR/Pyruvate kinase 1 antibody

## Immunogen

[Human PKLR/Pyruvate kinase 1 \(His Tag\) recombinant protein](#)

## Specificity

Human PKLR

## Antibody description

Rabbit polyclonal to PKLR/Pyruvate kinase 1

## Preparation

Produced in rabbits immunized with purified, recombinant Human PKLR (rh PKLR; NP\_000289.1; Leu47-Ser574). PKLR specific IgG was purified by Human PKLR affinity chromatography.

## Formulation

0.2 µm filtered solution in PBS

## Storage

This antibody can be stored at 2°C-8°C for one month without detectable loss of activity. Antibody products are stable for twelve months from date of receipt when stored at -20°C to -80°C. Preservative-Free.

Sodium azide is recommended to avoid contamination (final concentration 0.05%-0.1%). It is toxic to cells and should be disposed of properly. Avoid repeated freeze-thaw cycles.

## Clonality

Polyclonal

## Ig Type

Rabbit IgG

## Applications

ELISA, IHC-P

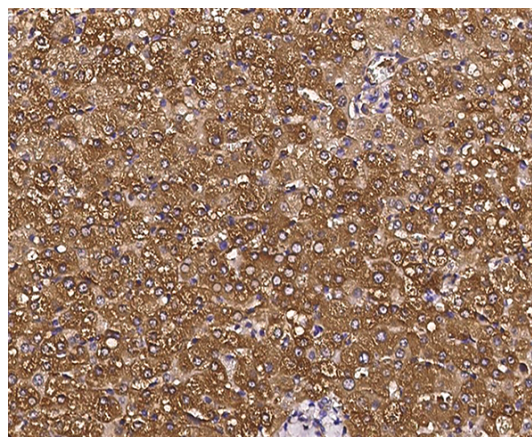
## Dilutions

ELISA:0.1-0.2 µg/mL

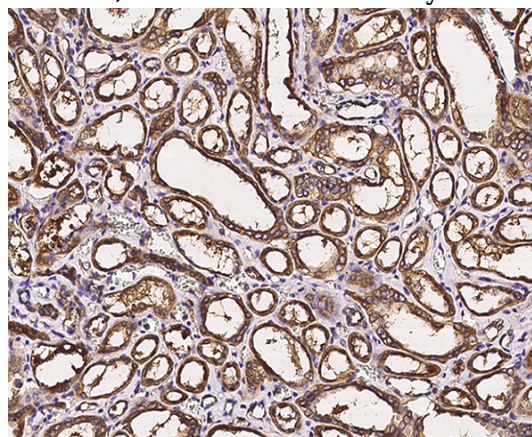
This antibody can be used at 0.1-0.2 µg/mL with the appropriate secondary reagents to detect Human PKLR. The detection limit for Human PKLR is < 0.039 ng/well.

IHC-P: 0.1-2 µg/ml

## Validations



PKLR Antibody, Rabbit PAb, Antigen Affinity Purified, Immunohistochemistry



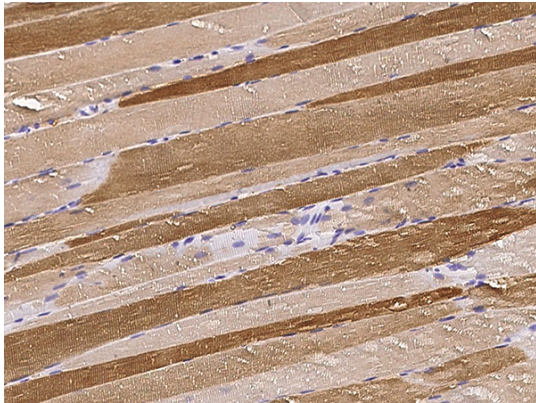
PKLR Antibody, Rabbit PAb, Antigen Affinity Purified, Immunohistochemistry

# Anti-PKLR/Pyruvate kinase 1 antibody



Catalog Number: 101000

---



PKLR Antibody, Rabbit PAb, Antigen Affinity Purified, Immunohistochemistry