

# Anti-SELP / P Selectin antibody



Catalog Number: 100970

## Product name

Anti-SELP / P Selectin antibody

## Immunogen

[Rhesus SELP / P Selectin \(His Tag\) recombinant protein](#)

## Specificity

Cynomolgus SELP / P Selectin

## Antibody description

Rabbit polyclonal to SELP / P Selectin

## Preparation

Produced in rabbits immunized with purified, recombinant Cynomolgus SELP / P Selectin (rh SELP / P Selectin; XP\_001094728.1; Met1-Ala771). SELP / P Selectin specific IgG was purified by Cynomolgus SELP / P Selectin affinity chromatography.

## Formulation

0.2 µm filtered solution in PBS

## Storage

This antibody can be stored at 2°C-8°C for one month without detectable loss of activity. Antibody products are stable for twelve months from date of receipt when stored at -20°C to -80°C.

Preservative-Free.

Sodium azide is recommended to avoid contamination (final concentration 0.05%-0.1%). It is toxic to cells and should be disposed of

properly. Avoid repeated freeze-thaw cycles.

## Clonality

Polyclonal

## Ig Type

Rabbit IgG

## Applications

ELISA, WB

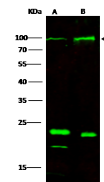
## Dilutions

WB: 10-15 µg/ml

ELISA:0.1-0.2 µg/mL

This antibody can be used at 0.1-0.2 µg/mL with the appropriate secondary reagents to detect Cynomolgus SELP / P Selectin. The detection limit for Cynomolgus SELP / P Selectin is < 0.039 ng/well.

## Validations



Lanes	A	B
Items		
Sample (Membrane lysate)	K562	293T
Sample Volume (µg/lane)	30	30
Gel	13% SDS-PAGE reducing gel	
Recommended Concentration	10.15µg/ml	
Secondary Antibody	Dylight 800 labeled Antibody to Rabbit IgG [1:1], at 1:5000 dilution	
Developed using Odyssey imaging system.		
Explanation	Predicted band size : 91 kDa Observed band size : 91 kDa Additional bands at : 23 kDa and 18 kDa (We are unsure as to the identity of these extra bands. They are possible non specific bindings).	

SELP / P Selectin Antibody, Rabbit PAb, Antigen Affinity Purified, Western blot