

Anti-Cyclophilin B / PPIB antibody



Catalog Number: 100948

Product name

Anti-Cyclophilin B / PPIB antibody

Specificity

Human Cyclophilin B / PPIB

Antibody description

Rabbit polyclonal to Cyclophilin B / PPIB

Preparation

Produced in rabbits immunized with a synthetic peptide corresponding to the center region of the Human Cyclophilin B / PPIB, and purified by antigen affinity chromatography.

Formulation

0.2 µm filtered solution in PBS

Storage

This antibody can be stored at 2°C-8°C for one month without detectable loss of activity. Antibody products are stable for twelve months from date of receipt when stored at -20°C to -80°C.

Preservative-Free.

Sodium azide is recommended to avoid contamination (final concentration 0.05%-0.1%). It is toxic to cells and should be disposed of properly. Avoid repeated freeze-thaw cycles.

Clonality

Polyclonal

Ig Type

Rabbit IgG

Applications

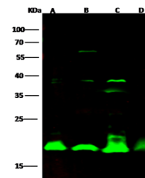
WB, IP

Dilutions

WB: 1-10 µg/ml

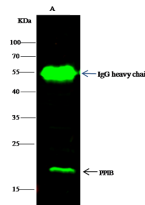
IP: 0.5-2 uL/mg of lysate

Validations



| Lanes | A | B | C | D |
|----------------------------|--|------|-------|-----|
| Sample (whole cell lysate) | HeLa | A431 | HepG2 | 293 |
| Sample Volume (µg/lane) | 30 | 30 | 30 | 30 |
| Gel | 13% SDS-PAGE reducing gel | | | |
| Recommended Concentration | 1-10 µg/ml | | | |
| Secondary Antibody | DyLight 800 labeled Antibody to Rabbit IgG (H+L), at 1:5000 dilution. | | | |
| Explanation | Developed using Odyssey imaging system. Predicted band size : 23 kDa Observed band size : 19 kDa Additional bands at : 60 kDa ,38 kDa and 36 kDa (We are unsure as to the identity of these extra bands.) | | | |

Cyclophilin B / PPIB Antibody, Rabbit PAb, Antigen Affinity Purified, Western blot



| Items | Lane | A |
|--------------------------------|------|--|
| Sample (whole cell lysate) | | HeLa |
| Sample quantity | | 0.5 mg |
| IP antibody quantity | | 2 µg |
| Immunomagnetic beads Protein G | | 60 µg |
| Gel | | 13% SDS-PAGE reducing gel |
| Primary antibody | | KLH-SMCC-tbnaA1242 antibody at 10 µg/ml |
| Secondary antibody | | DyLight 800-labeled antibody to rabbit IgG (H+L), at 1:5000 dilution |

Cyclophilin B / PPIB Antibody, Rabbit PAb, Antigen Affinity Purified, Immunoprecipitation