

# Anti-TRIM28 antibody



Catalog Number: 100932

## Product name

Anti-TRIM28 antibody

WB: 2-10 µg/ml

IHC-P: 0.05-1 µg/mL

## Specificity

human TRIM28

IP: 0.5-2 µg/mg of lysate

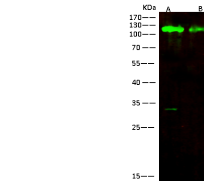
## Antibody description

Rabbit polyclonal to TRIM28

## Validations

## Preparation

Produced in rabbits immunized with A synthetic peptide corresponding to the C-terminus of the human TRIM28, and purified by antigen affinity chromatography.



Items	Lanes	A	B
Sample (whole cell lysate)		293T	Hela
Sample Volume (µg/lane)		30	30
Gel		13% SDS-PAGE reducing gel	
Recommended Concentration		2-10 µg/ml	
Secondary Antibody		Dylight 800 Labeled Antibody to Rabbit IgG (1:1), at 1:5000 dilution.	
Developed using Odyssey imaging system.			
Explanation		Predicted band size : 89 kDa Observed band size : 115 kDa Additional bands at : 33 kDa (We are unsure as to the identity of these extra bands. They are possible non-specific bindings).	

## Formulation

0.2 µm filtered solution in PBS

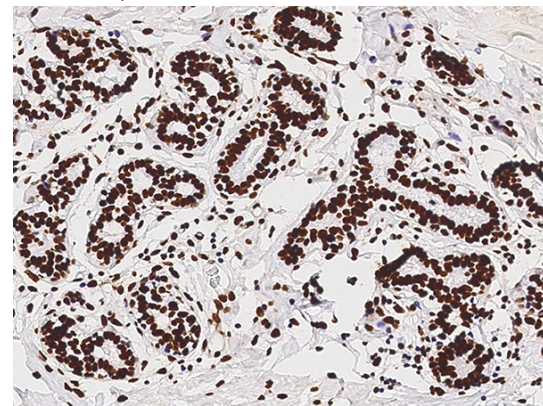
TRIM28 Antibody, Rabbit PAb, Antigen Affinity Purified, Western blot

## Storage

This antibody can be stored at 2°C-8°C for one month without detectable loss of activity. Antibody products are stable for twelve months from date of receipt when stored at -20°C to -80°C.

Preservative-Free.

Sodium azide is recommended to avoid contamination (final concentration 0.05%-0.1%). It is toxic to cells and should be disposed of properly. Avoid repeated freeze-thaw cycles.



TRIM28 Antibody, Rabbit PAb, Antigen Affinity Purified, Immunohistochemistry

## Clonality

Polyclonal

Immunochemical staining of human TRIM28 in human breast with rabbit polyclonal antibody (0.1 µg/mL, formalin-fixed paraffin embedded

## Ig Type

Rabbit IgG

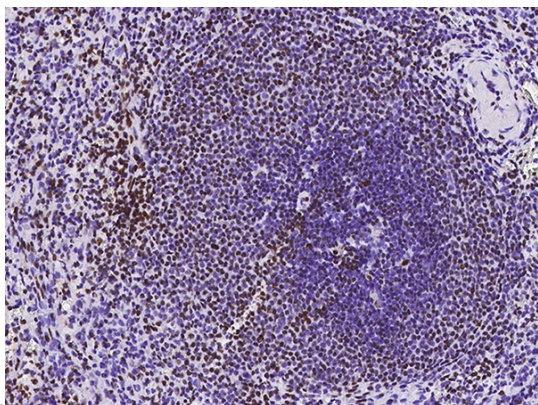
## Applications

WB, IHC-P, IP

## Dilutions

# Anti-TRIM28 antibody

Catalog Number: 100932



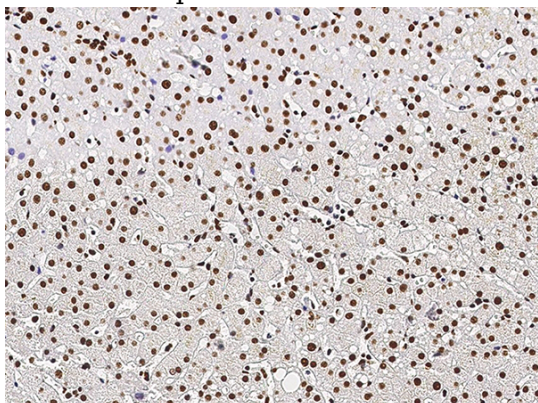
TRIM28 Antibody, Rabbit PAb, Antigen Affinity Purified, Immunohistochemistry

Immunochemical staining of human TRIM28 in human liver with rabbit polyclonal antibody (0.1 µg/mL, formalin-fixed paraffin embedded

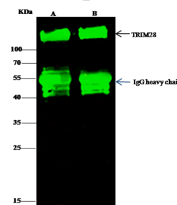
sections).

TRIM28 Antibody, Rabbit PAb, Antigen Affinity Purified, Immunohistochemistry

Immunochemical staining of human TRIM28 in human spleen with rabbit polyclonal antibody (0.1 µg/mL, formalin-fixed paraffin embedded



sections).



Items	Lanes	A	B
Sample (whole cell lysate)		293T	HeLa
Sample quantity		0.5 mg	
IP antibody quantity		2 µg	
Protein G agarose		15 µl of 50% Protein G Agarose	
Gel		13% SDS-PAGE (reducing gel)	
Primary antibody		RLE1-SMCC-simA544 antibody at 10 µg/ml	
Secondary antibody		Dylight 800 labeled antibody to rabbit IgG (1:1), at 1:5000 dilution	

sections).

TRIM28 Antibody, Rabbit PAb, Antigen Affinity Purified, Immunoprecipitation