

## Product name

Anti-Intestinal alkaline phosphatase antibody

## Immunogen

[Human Intestinal alkaline phosphatase \(His Tag\) recombinant protein](#)

## Specificity

Human ALPI / IAP

## Antibody description

Rabbit polyclonal to Intestinal alkaline phosphatase

## Preparation

Produced in rabbits immunized with purified, recombinant Human ALPI / IAP (rh ALPI / IAP; P09923; Met1-Asp503). ALPI / IAP specific IgG was purified by Human ALPI / IAP affinity chromatography.

## Formulation

0.2 µm filtered solution in PBS with 5% trehalose

## Storage

This antibody can be stored at 2°C-8°C for one month without detectable loss of activity. Antibody products are stable for twelve months from date of receipt when stored at -20°C to -80°C.

Preservative-Free.

Sodium azide is recommended to avoid contamination (final concentration 0.05%-0.1%). It is toxic to cells and should be disposed of properly. Avoid repeated freeze-thaw cycles.

## Clonality

Polyclonal

## Ig Type

Rabbit IgG

## Applications

ELISA, IHC-P

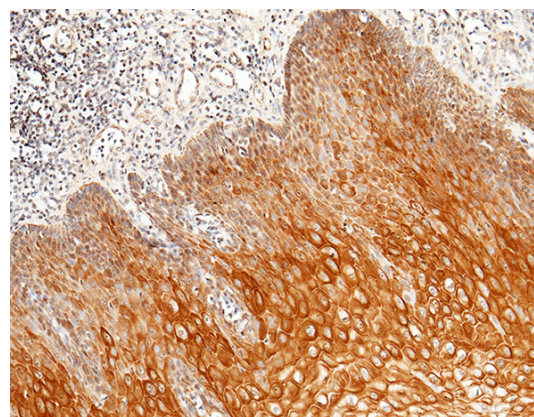
## Dilutions

ELISA: 0.1-0.2 µg/mL

This antibody can be used at 0.1-0.2 µg/mL with the appropriate secondary reagents to detect Human ALPI / IAP. The detection limit for Human ALPI / IAP is approximately 0.00245 ng/well.

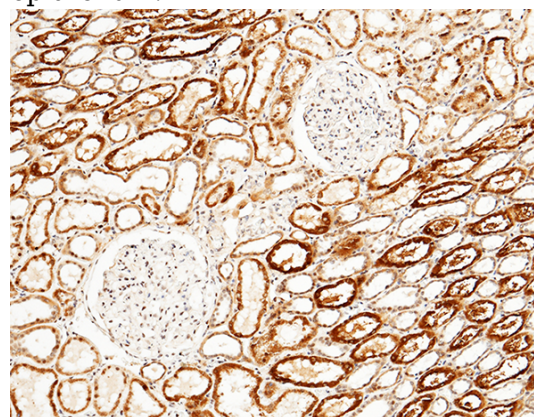
IHC-P: 0.1-2 µg/mL

## Validations



Alkaline Phosphatase / ALPI Antibody, Rabbit PAb, Antigen Affinity Purified, Immunohistochemistry

Immunochemical staining of human ALPI in human esophagus with rabbit polyclonal antibody (1 µg/mL, formalin-fixed paraffin embedded sections). Positive staining was localized to epithelium.



# Anti-Intestinal alkaline phosphatase antibody

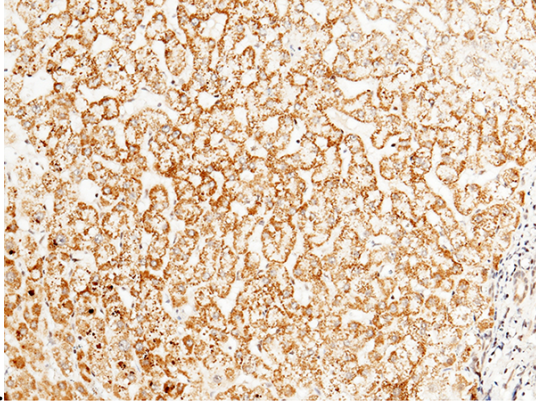


Catalog Number: 100891

---

Alkaline Phosphatase / ALPI Antibody, Rabbit PAb, Antigen Affinity Purified, Immunohistochemistry

Immunochemical staining of human ALPI in human kidney with rabbit polyclonal antibody (1  $\mu\text{g}/\text{mL}$ , formalin-fixed paraffin embedded sections). Positive staining was localized to nephric



tubule.

Alkaline Phosphatase / ALPI Antibody, Rabbit PAb, Antigen Affinity Purified, Immunohistochemistry

Immunochemical staining of human ALPI in human liver with rabbit polyclonal antibody (1  $\mu\text{g}/\text{mL}$ , formalin-fixed paraffin embedded sections). Positive staining was localized to hepatocyte.