

Anti-MYL3 antibody



Catalog Number: 100870

Product name

Anti-MYL3 antibody

Specificity

human MYL3

Antibody description

Rabbit polyclonal to MYL3

Preparation

Produced in rabbits immunized with A synthetic peptide corresponding to the N-terminus of the human MYL3, and purified by antigen affinity chromatography.

Formulation

0.2 µm filtered solution in PBS

Storage

This antibody can be stored at 2°C-8°C for one month without detectable loss of activity. Antibody products are stable for twelve months from date of receipt when stored at -20°C to -80°C.

Preservative-Free.

Sodium azide is recommended to avoid contamination (final concentration 0.05%-0.1%). It is toxic to cells and should be disposed of

properly. Avoid repeated freeze-thaw cycles.

Clonality

Polyclonal

Ig Type

Rabbit IgG

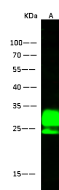
Applications

WB

Dilutions

WB: 1-10 µg/ml

Validations



Items	Lanes	A
Sample		Mouse heart tissue lysate
Sample Volume (µg/lane)		30
Gel		13% SDS-PAGE reducing gel
Recommended Concentration		1-10 µg/ml
Secondary Antibody		Dylight 800-labeled Antibody to Rabbit IgG (H+L), at 1:5000 dilution.
Developed using Odyssey imaging system.		
Explanation		Predicted band size: 21 kDa Observed band size: 26 kDa Additional bands at ~24kDa (We are unsure as to the identity of these extra bands. They are possible non-specific bindings).

MYL3 Antibody, Rabbit PAb, Antigen Affinity Purified, Western blot