

Anti-XPNPEP2 antibody

Catalog Number: 100863

Product name

Anti-XPNPEP2 antibody

Immunogen

[Human XPNPEP2 \(His Tag\) recombinant protein](#)

Specificity

Human XPNPEP2

Antibody description

Rabbit monoclonal to XPNPEP2

Preparation

This antibody was obtained from a rabbit immunized with purified, recombinant Human XPNPEP2 (rh XPNPEP2; O43895; Met1-Ala650).

Formulation

0.2 µm filtered solution in PBS with 5% trehalose

Storage

This antibody can be stored at 2°C-8°C for one month without detectable loss of activity. Antibody products are stable for twelve months from date of receipt when stored at -20°C to -80°C.

Preservative-Free.

Sodium azide is recommended to avoid contamination (final concentration 0.05%-0.1%). It is toxic to cells and should be disposed of properly. Avoid repeated freeze-thaw cycles.

Clonality

Monoclonal

Ig Type

Rabbit IgG

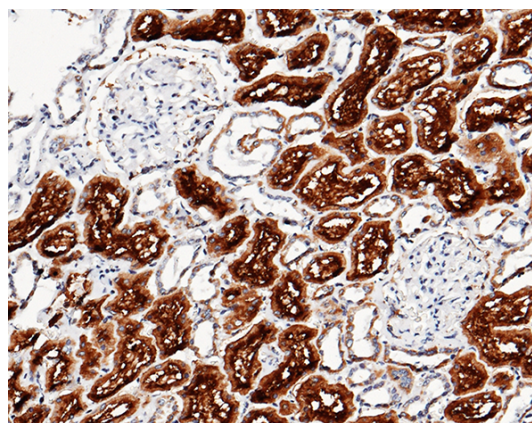
Applications

IHC-P

Dilutions

IHC-P: 1-10 µg/mL

Validations



XPNPEP2 Antibody, Rabbit MAb, Immunohistochemistry

Immunochemical staining of human XPNPEP2 in human kidney with rabbit monoclonal antibody (10 µg/mL, formalin-fixed paraffin embedded sections).