

Anti-CDC42 antibody



Catalog Number: 100815

Product name

Anti-CDC42 antibody

Immunogen

[Human CDC42 \(GST Tag\) recombinant protein](#)

Specificity

Human CDC42

Antibody description

Rabbit polyclonal to CDC42

Preparation

Produced in rabbits immunized with purified, recombinant Human CDC42 (rh CDC42; P60953-2; Met1-Cys188). CDC42 specific IgG was purified by Human CDC42 affinity chromatography.

Formulation

0.2 µm filtered solution in PBS

Storage

This antibody can be stored at 2°C-8°C for one month without detectable loss of activity. Antibody products are stable for twelve months from date of receipt when stored at -20°C to -80°C.

Preservative-Free.

Sodium azide is recommended to avoid contamination (final concentration 0.05%-0.1%). It is toxic to cells and should be disposed of properly. Avoid repeated freeze-thaw cycles.

Clonality

Polyclonal

Ig Type

Rabbit IgG

Applications

ELISA, WB, IP

Dilutions

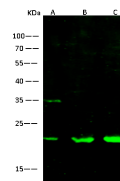
WB: 5-10 µg/ml

ELISA: 0.1-0.2 µg/mL

This antibody can be used at 0.1-0.2 µg/mL with the appropriate secondary reagents to detect Human CDC42. The detection limit for Human CDC42 is < 0.039 ng/well.

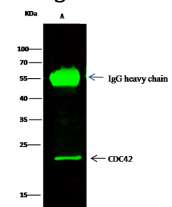
IP: 1-4 µg/mg of lysate

Validations



Lanes	A	B	C
Items			
Sample (whole cell lysate)	HepG2	Jurkat	HeLa
Sample Volume (µg/lane)	30	30	30
Gel	13% SDS-PAGE reducing gel		
Recommended Concentration	5-10 µg/ml		
Secondary Antibody	Dylight 800 labeled Antibody to Rabbit IgG (H+L), at 1:5000 dilution.		
Developed using Odyssey imaging system.			
Explanation	Predicted band size : 21 kDa Observed band size : 21 kDa Additional bands at : 35 kDa (We are unsure as to the identity of these extra bands. They are possible non-specific bindings).		

CDC42 Antibody, Rabbit PAb, Antigen Affinity



Lanes	A
Items	
Sample (whole-cell lysate)	Jurkat
Sample quantity	0.5 mg
IP antibody quantity	2 µg
Protein G agarose	15 µl of 50% Protein G Agarose
Gel	13% SDS-PAGE reducing gel
Primary antibody	GST-CDC42 antibody at 5 µg/ml
Secondary antibody	Dylight 800-labeled antibody to rabbit IgG (H+L), at 1:5000 dilution.

Purified, Western blot

CDC42 Antibody, Rabbit PAb, Antigen Affinity

Purified, Immunoprecipitation