

# Anti-Tetranectin/CLEC3B antibody



Catalog Number: 100751

## Product name

Anti-Tetranectin/CLEC3B antibody

## Immunogen

[Mouse Tetranectin/CLEC3B \(His Tag\) recombinant protein](#)

## Specificity

Mouse CLEC3B / Tetranectin

## Antibody description

Rabbit polyclonal to Tetranectin/CLEC3B

## Preparation

Produced in rabbits immunized with purified, recombinant Mouse CLEC3B / Tetranectin (rM CLEC3B / Tetranectin; P43025; Met1-Val202). CLEC3B / Tetranectin specific IgG was purified by Mouse CLEC3B / Tetranectin affinity chromatography.

## Formulation

0.2 µm filtered solution in PBS with 5% trehalose

## Storage

This antibody can be stored at 2°C-8°C for one month without detectable loss of activity. Antibody products are stable for twelve months from date of receipt when stored at -20°C to -80°C.

Preservative-Free.

Sodium azide is recommended to avoid contamination (final concentration 0.05%-0.1%). It is toxic to cells and should be disposed of properly. Avoid repeated freeze-thaw cycles.

## Clonality

Polyclonal

## Ig Type

Rabbit IgG

## Applications

ELISA, IHC-P

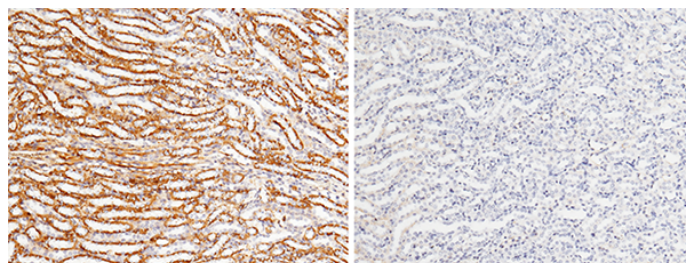
## Dilutions

ELISA: 0.1-0.2 µg/mL

This antibody can be used at 0.1-0.2 µg/mL with the appropriate secondary reagents to detect Mouse CLEC3B / Tetranectin. The detection limit for Mouse CLEC3B / Tetranectin is approximately 0.00975 ng/well.

IHC-P: 0.1-2 µg/mL

## Validations



Mouse CLEC3B Antibody	+	+
Mouse CLEC3B Antigen	-	+

CLEC3B / Tetranectin Antibody, Rabbit PAb, Antigen Affinity Purified, Immunohistochemistry

Immunochemical staining of mouse CLEC3B in mouse kidney with rabbit polyclonal antibody (1 µg/mL, formalin-fixed paraffin embedded sections). The left panel: tissue incubated with primary antibody; The right panel: tissue incubated with the mixture of primary antibody and antigen (recombinant protein).