

# Anti-ADPRH/ADP ribosylarginine hydrolase antibody



Catalog Number: 100741

## Product name

Anti-ADPRH/ADP ribosylarginine hydrolase antibody

## Immunogen

[Human ADPRH/ADP ribosylarginine hydrolase \(His Tag\) recombinant protein](#)

## Specificity

Human ADPRH

## Antibody description

Rabbit polyclonal to ADPRH/ADP ribosylarginine hydrolase

## Preparation

Produced in rabbits immunized with purified, recombinant Human ADPRH (rh ADPRH; NP\_001116.1; Met1-Leu351). ADPRH specific IgG was purified by Human ADPRH affinity chromatography.

## Formulation

0.2 µm filtered solution in PBS

## Storage

This antibody can be stored at 2°C-8°C for one month without detectable loss of activity. Antibody products are stable for twelve months from date of receipt when stored at -20°C to -80°C. Preservative-Free.

Sodium azide is recommended to avoid contamination (final concentration 0.05%-0.1%). It is toxic to cells and should be disposed of properly. Avoid repeated freeze-thaw cycles.

## Clonality

Polyclonal

## Ig Type

Rabbit IgG

## Applications

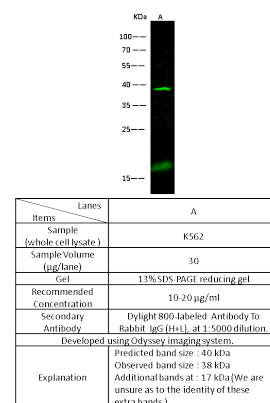
WB, IP

## Dilutions

WB: 10-20 µg/ml

IP: 1-4 µg/mg of lysate

## Validations



ADPRH Antibody, Rabbit PAb, Antigen Affinity Purified, Western blot