

Anti-Selenoprotein M antibody



Catalog Number: 100739

Product name

Anti-Selenoprotein M antibody

Immunogen

[Human Selenoprotein M \(His Tag\)](#)

Specificity

Human SELM / Selenoprotein M

Antibody description

Rabbit polyclonal to Selenoprotein M

Preparation

Produced in rabbits immunized with purified, recombinant Human SELM / Selenoprotein M (rh SELM / Selenoprotein M; Q8WWX9; Ala24-Leu145). SELM / Selenoprotein M specific IgG was purified by Human SELM / Selenoprotein M affinity chromatography.

Formulation

0.2 µm filtered solution in PBS with 5% trehalose

Storage

This antibody can be stored at 2°C-8°C for one month without detectable loss of activity. Antibody products are stable for twelve months from date of receipt when stored at -20°C to -80°C.

Preservative-Free.

Sodium azide is recommended to avoid contamination (final concentration 0.05%-0.1%). It is toxic to cells and should be disposed of properly. Avoid repeated freeze-thaw cycles.

Clonality

Polyclonal

Ig Type

Rabbit IgG

Applications

ELISA, IHC-P

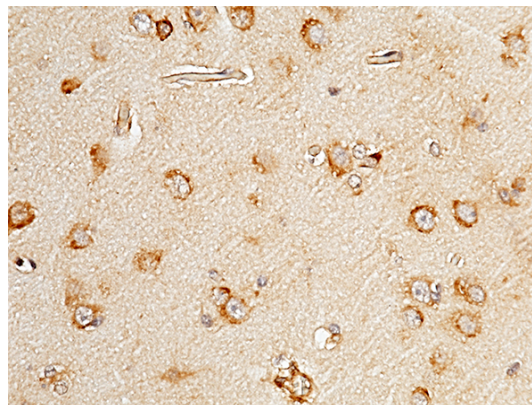
Dilutions

ELISA: 0.1-0.2 µg/mL

This antibody can be used at 0.1-0.2 µg/mL with the appropriate secondary reagents to detect Human SELM / Selenoprotein M. The detection limit for Human SELM / Selenoprotein M is approximately 0.00975 ng/well.

IHC-P: 0.1-2 µg/mL

Validations



SELM / Selenoprotein M Antibody, Rabbit PAb, Antigen Affinity Purified, Immunohistochemistry

Immunochemical staining of human SELM in human brain with rabbit polyclonal antibody (1 µg/mL, formalin-fixed paraffin embedded sections).