

Anti-IL-15RA/IL15RA antibody



Catalog Number: 100733

Product name

Anti-IL-15RA/IL15RA antibody

Specificity

human IL15RA

Antibody description

Rabbit polyclonal to IL-15RA/IL15RA

Preparation

Produced in rabbits immunized with A synthetic peptide corresponding to the center region of the human cd215, and purified by antigen affinity chromatography.

Formulation

0.2 μ m filtered solution in PBS

Storage

This antibody can be stored at 2°C-8°C for one month without detectable loss of activity. Antibody products are stable for twelve months from date of receipt when stored at -20°C to -80°C.

Preservative-Free.

Sodium azide is recommended to avoid contamination (final concentration 0.05%-0.1%). It is toxic to cells and should be disposed of

properly. Avoid repeated freeze-thaw cycles.

Clonality

Polyclonal

Ig Type

Rabbit IgG

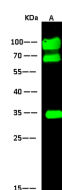
Applications

WB

Dilutions

WB: 1-10 μ g/ml

Validations



Items	Lanes	A
Sample		Mouse liver tissue lysate
Sample Volume (μ g/lane)		30
Gel		13% SDS-PAGE reducing gel
Recommended Concentration		1-10 μ g/ml
Secondary Antibody		Dylight 800-labeled Antibody To Rabbit IgG (H+L), at 1:5000 dilution.
Explanation		Developed using Odyssey imaging system. Predicted band size : 28 kDa Observed band size : 34 kDa Additional bands at : 100 kDa and 70 kDa (We are unsure as to the identity of these extra bands. They are possible non-specific bindings).

cd215 Antibody, Rabbit PAb, Antigen Affinity Purified, Western blot