

# Anti-HAT1 antibody



Catalog Number: 100730

## Product name

Anti-HAT1 antibody

## Specificity

Human HAT1

## Antibody description

Rabbit polyclonal to HAT1

## Preparation

Produced in rabbits immunized with a synthetic peptide corresponding to the center region of the Human HAT1, and purified by antigen affinity chromatography.

## Formulation

0.2  $\mu$ m filtered solution in PBS

## Storage

This antibody can be stored at 2°C-8°C for one month without detectable loss of activity. Antibody products are stable for twelve months from date of receipt when stored at -20°C to -80°C. Preservative-Free.

Sodium azide is recommended to avoid contamination (final concentration 0.05%-0.1%). It is toxic to cells and should be disposed of properly. Avoid repeated freeze-thaw cycles.

## Clonality

Polyclonal

## Ig Type

Rabbit IgG

## Applications

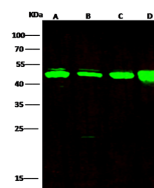
WB, IF, ICC/IF

## Dilutions

WB: 1-10  $\mu$ g/ml

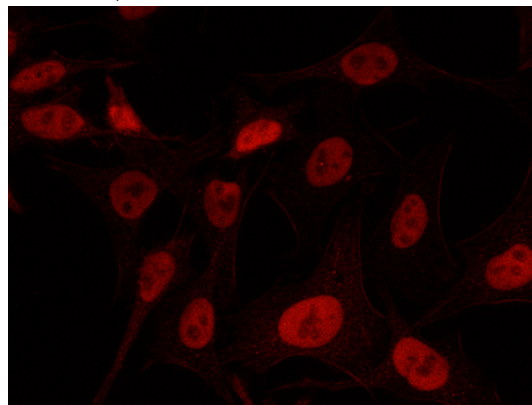
ICC/IF: 0.5-1.5  $\mu$ g/mL

## Validations



Lanes	A	B	C	D
Sample [whole cell lysate]	Jurkat	K562	HepG2	U87MG
Sample Volume ( $\mu$ g/lane)	30	30	30	30
Gel	13% SDS-PAGE reducing gel			
Recommended Concentration	1-10 $\mu$ g/ml			
Secondary Antibody	Dylight 800-labeled Antibody to Rabbit IgG [H+], at 1:5000 dilution. Developed using Odyssey imaging system.			
Explanation	Predicted band size : 49 kDa Observed band size : 49 kDa			

HAT1 Antibody, Rabbit PAb, Antigen Affinity Purified, Western blot



HAT1 Antibody, Rabbit PAb, Antigen Affinity Purified, Immunofluorescence

Immunofluorescence staining of HAT1 in HeLa cells. Cells were fixed with 4% PFA, blocked with 10% serum, and incubated with rabbit anti-human HAT1 polyclonal antibody (1  $\mu$ g/ml) at 4°C overnight. Then cells were stained with the Alexa Fluor®594-conjugated Go