

Anti-IL-10 antibody



Catalog Number: 100723

Product name

Anti-IL-10 antibody

Immunogen

[Sus scrofa \(Pig\) IL-10 \(Pig\) recombinant protein](#)

Specificity

Sus scrofa (Pig) IL-10

Antibody description

Rabbit polyclonal to IL-10

Preparation

Produced in rabbits immunized with purified, recombinant Sus scrofa (Pig) IL-10 (rh IL-10; Q29055; Ser19-Asn175). IL-10 specific IgG was purified by Sus scrofa (Pig) IL-10 affinity chromatography.

Formulation

0.2 µm filtered solution in PBS

Storage

This antibody can be stored at 2°C-8°C for one month without detectable loss of activity. Antibody products are stable for twelve months from date of receipt when stored at -20°C to -80°C.

Preservative-Free.

Sodium azide is recommended to avoid contamination (final concentration 0.05%-0.1%). It is toxic to cells and should be disposed of properly. Avoid repeated freeze-thaw cycles.

Clonality

Polyclonal

Ig Type

Rabbit IgG

Applications

ELISA, WB

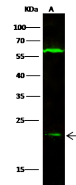
Dilutions

WB: 10-30 µg/ml

ELISA:0.1-0.2 µg/mL

This antibody can be used at 0.1-0.2 µg/mL with the appropriate secondary reagents to detect Sus scrofa (Pig) IL-10. The detection limit for Sus scrofa (Pig) IL-10 is < 0.039 ng/well.

Validations



Lanes	A
Items	
Sample (whole cell lysate)	Jurkat
Sample Volume (µg/lane)	30
Gel	13% SDS-PAGE reducing gel
Recommended Concentration	10-30 µg/ml
Secondary Antibody	Dylight 800 Labeled Antibody to Rabbit IgG (H+), at 1:5000 dilution.
Developed using Odyssey imaging system.	
Explanation	Predicted band size : 20 kDa Observed band size : 22 kDa Additional bands at : 58 kDa (We are unsure as to the identity of these extra bands. They are possible non-specific bindings).

IL-10 Antibody, Rabbit PAb, Antigen Affinity Purified, Western blot