

Anti-PEDF antibody



Catalog Number: 100689

Product name

Anti-PEDF antibody

Immunogen

[Human PEDF \(His Tag\) recombinant protein](#)

Specificity

Human SerpinF1 / PEDF

Antibody description

Rabbit monoclonal to PEDF

Preparation

This antibody was obtained from a rabbit immunized with purified, recombinant Human SerpinF1 / PEDF (rh SerpinF1 / PEDF; NP_002606.3; Met1-Pro418).

Formulation

0.2 µm filtered solution in PBS with 5% treha

Storage

This antibody can be stored at 2°C-8°C for one month without detectable loss of activity. Antibody products are stable for twelve months from date of receipt when stored at -20°C to -80°C.

Preservative-Free.

Sodium azide is recommended to avoid

contamination (final concentration 0.05%-0.1%). It is toxic to cells and should be disposed of properly. Avoid repeated freeze-thaw cycles.

Clonality

Monoclonal

Ig Type

Rabbit IgG

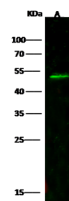
Applications

WB

Dilutions

WB: 20-30 µg/ml

Validations



Lanes	A
Items	
Sample (whole cell lysate)	293T
Sample Volume (µg/lane)	30
Gel	13% SDS-PAGE reducing gel
Recommended Concentration	20-30µg/ml
Secondary Antibody	Dylight 800-labeled Antibody to Rabbit IgG (H+L), at 1:5000 dilution.
Developed using Odyssey imaging system.	
Explanation	Predicted band size : 46 kDa Observed band size : 50 kDa

SerpinF1 / PEDF Antibody, Rabbit MAb, Western blot