

# Anti-MAP2 antibody



Catalog Number: 100614

## Product name

Anti-MAP2 antibody

## Immunogen

[Mouse MAP2 \(His Tag\) recombinant protein](#)

## Specificity

Mouse MAP2 / METAP2

## Antibody description

Rabbit monoclonal to MAP2

## Preparation

This antibody was obtained from a rabbit immunized with purified, recombinant Mouse MAP2 / METAP2 (rM MAP2 / METAP2; O08663; Ala2-Tyr478).

## Formulation

0.2  $\mu$ m filtered solution in PBS with 5% treha

## Storage

This antibody can be stored at 2°C-8°C for one month without detectable loss of activity. Antibody products are stable for twelve months from date of receipt when stored at -20°C to -80°C.

Preservative-Free.

Sodium azide is recommended to avoid contamination (final concentration 0.05%-0.1%). It is toxic to cells and should be disposed of properly. Avoid repeated freeze-thaw cycles.

## Clonality

Monoclonal

## Ig Type

Rabbit IgG

## Applications

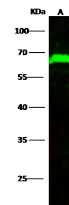
WB, IP

## Dilutions

WB: 5-10  $\mu$ g/ml

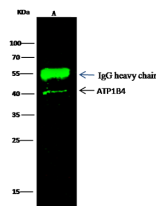
IP: 1-4  $\mu$ g/mg of lysate

## Validations



Lanes	A
Items	
Sample (whole cell lysate)	HepG2
Sample Volume ( $\mu$ g/lane)	30
Gel	13% SDS-PAGE reducing gel
Recommended Concentration	5-10 $\mu$ g/ml
Secondary Antibody	Dylight 800 labeled Antibody to Rabbit IgG (H+L), at 1:5000 dilution.
Developed using Odyssey imaging system.	
Explanation	Predicted band size : 52 kDa Observed band size : 65 kDa

## MAP2 / METAP2 Antibody, Rabbit MAb, Western



Lanes	A
Items	
Sample (whole cell lysate)	HepG2
Sample quantity	0.5 mg
IP antibody quantity	2 $\mu$ g
Protein G agarose	15 $\mu$ l of 50% Protein G Agarose
Gel	13% SDS-PAGE reducing gel
Primary antibody	ATP1B4 antibody at 5 $\mu$ g/ml [Cat# 13027-R108]
Secondary antibody	Dylight 800-labelled antibody to rabbit IgG (H+L), at 1:5000 dilution.

blot

## MAP2 / METAP2 Antibody, Rabbit MAb, Immunoprecipitation