

Anti-CTHRC1 antibody



Catalog Number: 100564

Product name

Anti-CTHRC1 antibody

Immunogen

[Human CTHRC1 \(His Tag\) recombinant protein](#)

Specificity

Human CTHRC1

Antibody description

Rabbit monoclonal to CTHRC1

Preparation

This antibody was obtained from a rabbit immunized with purified, recombinant Human CTHRC1 (rh CTHRC1; NP_612464.1; Met1-Lys243).

Formulation

0.2 µm filtered solution in PBS with 5% trehalose

Storage

This antibody can be stored at 2°C-8°C for one month without detectable loss of activity. Antibody products are stable for twelve months from date of receipt when stored at -20°C to -80°C.

Preservative-Free.

Sodium azide is recommended to avoid contamination (final concentration 0.05%-0.1%). It is toxic to cells and should be disposed of properly. Avoid repeated freeze-thaw cycles.

Clonality

Monoclonal

Ig Type

Rabbit IgG

Applications

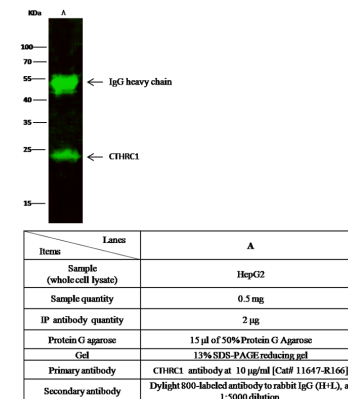
WB, IP

Dilutions

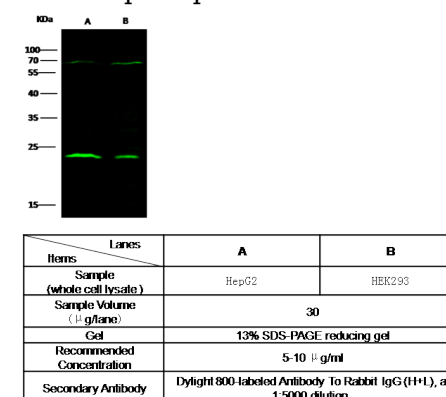
WB: 5-10 µg/mL

IP: 1-4 µg/mg of lysate

Validations



CTHRC1 Antibody, Rabbit MAb, Immunoprecipitation



CTHRC1 Antibody, Rabbit MAb, Western blot