

# Anti-KLF4 antibody



Catalog Number: 100550

## Product name

Anti-KLF4 antibody

## Specificity

human KLF4

## Antibody description

Rabbit polyclonal to KLF4

## Preparation

Produced in rabbits immunized with A synthetic peptide corresponding to the N-terminus of the human KLF4, and purified by antigen affinity chromatography.

## Formulation

0.2 µm filtered solution in PBS

## Storage

This antibody can be stored at 2°C-8°C for one month without detectable loss of activity. Antibody products are stable for twelve months from date of receipt when stored at -20°C to -80°C.

Preservative-Free.

Sodium azide is recommended to avoid contamination (final concentration 0.05%-0.1%). It is toxic to cells and should be disposed of properly. Avoid repeated freeze-thaw cycles.

## Clonality

Polyclonal

## Ig Type

Rabbit IgG

## Applications

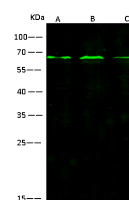
WB, IP

## Dilutions

WB: 10-20 µg/ml

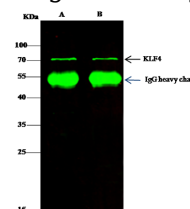
IP: 4-6 µg/mg of lysate

## Validations



Items	Lanes	A	B	C
Sample (whole cell lysate)		293T	Caco-2	HEK293
Sample Volume (µg/lane)		30	30	30
Gel		13% SDS-PAGE reducing gel		
Recommended Concentration		10-20 µg/ml		
Secondary Antibody		Dylight 800-labeled Antibody to Rabbit IgG (H+L), at 1:5000 dilution.		
Explanation		Developed using Odyssey imaging system. Predicted band size : 54 kDa Observed band size : 65 kDa		

## KLF4 Antibody, Rabbit PAb, Antigen Affinity



Items	Lanes	A	B
Sample (whole cell lysate)		Hela	293T
Sample quantity		0.5 mg	
IP antibody quantity		2 µg	
Protein G agarose		1.5 µl of 50% Protein G Agarose	
Gel		13% SDS-PAGE reducing gel	
Primary antibody		KLf4-SMCC-SinoA18 antibody at 10 µg/ml	
Secondary antibody		Dylight 800-labeled antibody to rabbit IgG (H+L), at 1:5000 dilution	

Purified, Western blot

## KLF4 Antibody, Rabbit PAb, Antigen Affinity

Purified, Immunoprecipitation