

Anti-ERCC8 / CSA antibody



Catalog Number: 100549

Product name

Anti-ERCC8 / CSA antibody

Specificity

Human ERCC8

Antibody description

Rabbit polyclonal to ERCC8 / CSA

Preparation

Produced in rabbits immunized with a synthetic peptide corresponding to the C-terminus of the human ERCC8, and purified by antigen affinity chromatography.

Formulation

0.2 μ m filtered solution in PBS

Storage

This antibody can be stored at 2°C-8°C for one month without detectable loss of activity. Antibody products are stable for twelve months from date of receipt when stored at -20°C to -80°C.

Preservative-Free.

Sodium azide is recommended to avoid contamination (final concentration 0.05%-0.1%). It is toxic to cells and should be disposed of properly. Avoid repeated freeze-thaw cycles.

Clonality

Polyclonal

Ig Type

Rabbit IgG

Applications

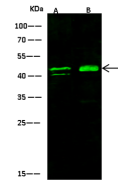
WB, IF, ICC/IF

Dilutions

WB: 5-10 μ g/ml

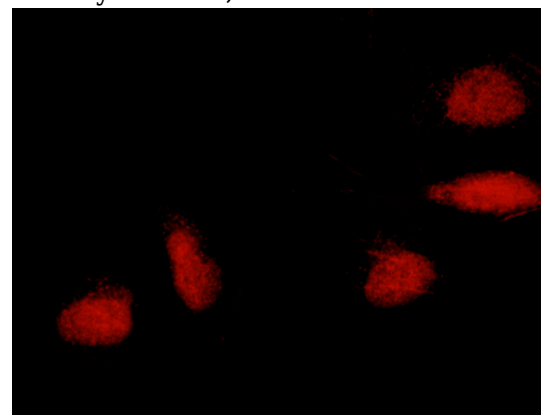
ICC/IF: 0.5-1.5 μ g/ml

Validations



Items	Lanes	A	B
Sample		Jurkat (whole cell lysate)	Mouse spleen tissue lysate
Sample Volume (μ g/lane)		30	30
Gel	13% SDS-PAGE reducing gel		
Recommended Concentration	5-10 μ g/ml		
Secondary Antibody	Dylight 800 labeled Antibody To Rabbit IgG (H+L), at 1:5000 dilution.		
Explanation	Developed using Odyssey imaging system. Predicted band size : 44 kDa Observed band size : 44 kDa Additional bands at : 40 kDa (We are unsure as to the identity of these extra bands. They are possible non-specific bindings).		

ERCC8 / CSA Antibody, Rabbit PAb, Antigen Affinity Purified, Western blot



ERCC8 / CSA Antibody, Rabbit PAb, Antigen Affinity Purified, Immunofluorescence

Immunofluorescence staining of ERCC8 in HeLa cells. Cells were fixed with 4% PFA, permeabilized with 0.3% Triton X-100 in PBS, blocked with 10% serum, and incubated with rabbit anti-human ERCC8 polyclonal antibody (1 μ g/ml) at 4°C overnight. Then cells were stained with the Alexa Fluor® 594-conjugated Goat Anti-rabbit IgG secondary antibody (red). Positive staining was localized to nucleus.